



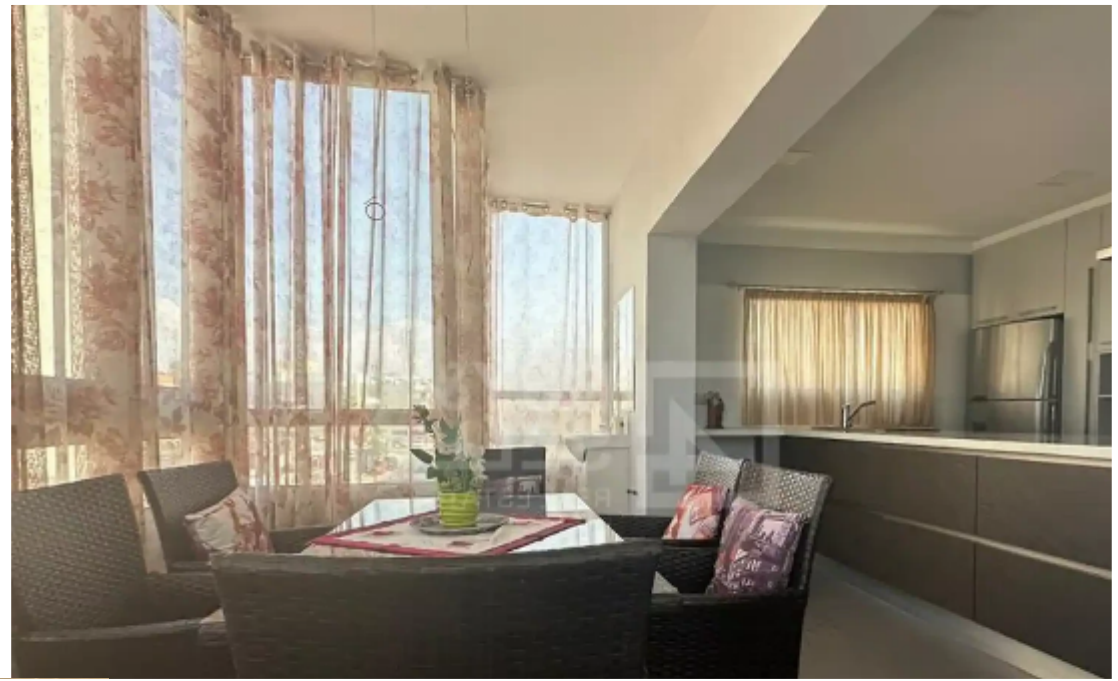
3-bedroom apartment f?r s?le

Limassol, Panthea-Mesa-Geitonia-4007 , Cyprus

Offered at: € 440,000

Estate ID: 70681

Ref: ba5270716





NET internal area: **180**



Bathrooms: **2**



Bedrooms: **3**



Parking spaces: **No cars**



Available from: **2024-10-25**



Offered at: **440,000**



Type: **Apartment**

Discover the ideal property for sale, located in a small building close to the City Centre and with easy access to the highway. A generous internal area spanning over 180 square meters, providing ample living space for your comfort, and an impressive 140 square meters of garden veranda and BBQ area, offering a delightful outdoor extension to your living space. Experience the perfect balance of indoor and outdoor living in this spacious apartment. Consisting of 3 bedrooms, the master bedroom is equipped with en-suite bathroom, plus another main bathroom. 2 living areas, fully equipped kitchen with 2 ovens and another oven externally. The apartment is sold fully furnished and...

Estate on map:

