



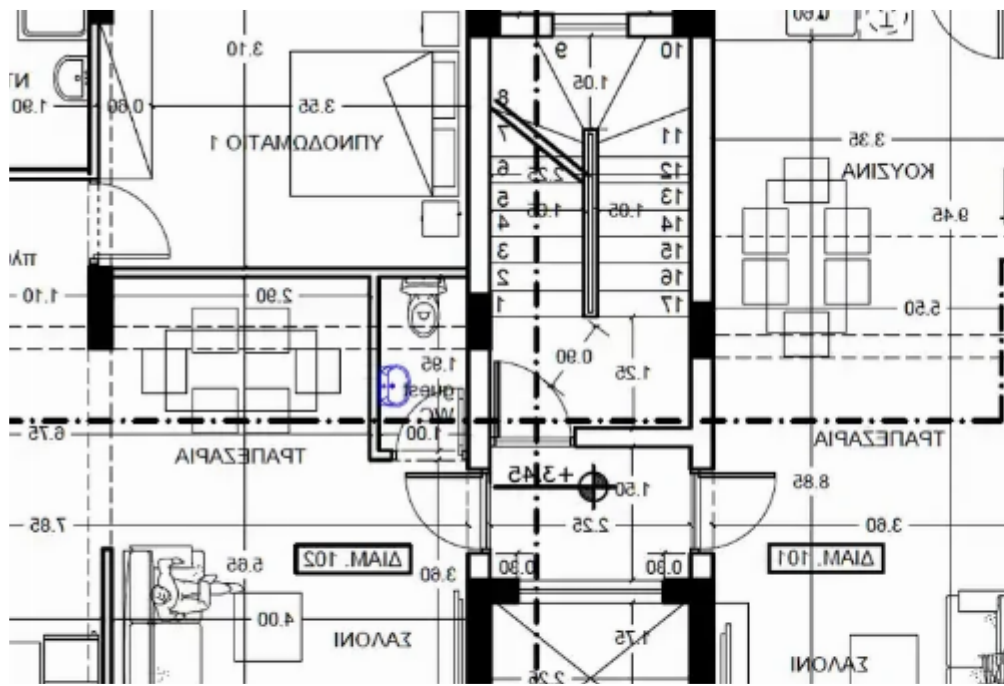
2-bedroom apartment f?r s?le

Limassol, Pano-Polemidia-4130 , Cyprus

Offered at: € 244,000

Estate ID: 71652

Ref: ba5375055





NET internal area: **101**



Bathrooms: **2**



Bedrooms: **2**



Parking spaces: **Covered cars**



Available from: **2024-10-25**



Offered at: **244,000**



Type: **Apartment**

.....This stunning complex is situated in the sought after, upcoming area of Polemidia, close to the New Marina and Europe's largest Casino resort giving the investor easy access to the highway and City Centre. This modern looking project consists of 3 floors with only 6 spacious readily available apartments. All apartments boast luxurious finishing touches throughout and ensure that each unit gets enough natural light, while also offering residents uninterrupted views of their surroundings. All of this apartments will have a great rental opportunity. AVAILABILITY Apartment 1st , 2nd 3rd floors Covered area 80,50 sq.m. Covered veranda 21 sq.m. There are more apartments ava...

Estate on map:

image not found or type unknown



