



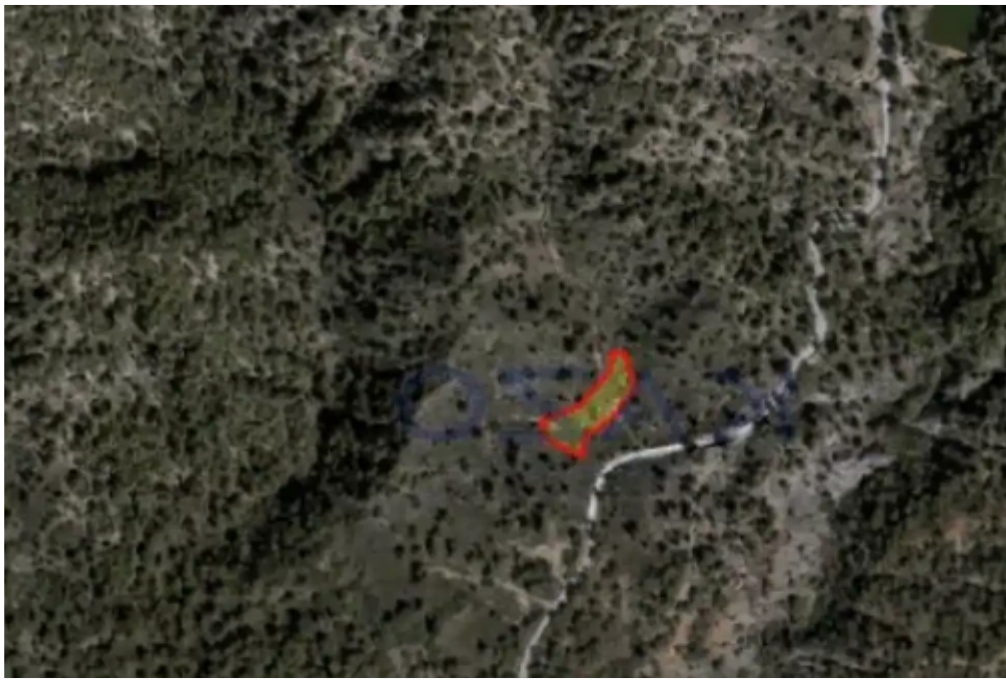
Residential land 2342 m²

Limassol, Pera-Pedi-4779 , Cyprus

Offered at: € 150,000

Estate ID: 72069

Ref: ba5430866





Total plot's-land's area: **2342 m²**



Coverage: **15 %**



Density: **15 %**



Available from: **2024-10-25**



Offered at: **150,000**



Type: **Residential**

""Located in the beautiful village of Pera Pedi, this land parcel has an extent of 2,342 square meters and falls into an H7 residential zone. Pera Pedi village has a 34 kilometers distance from Limassol. It holds a 15% building density, 15% building coverage, with an 8.3 meter in height and a maximum allowance of two floors. In addition, this land parcel offers a net buildable area of 352 square meters, enough space for housing development. For more information about this residential land parcel in Pera Pedi, contact our Sales Department or Book a Viewing Form!""...

Estate on map:



