



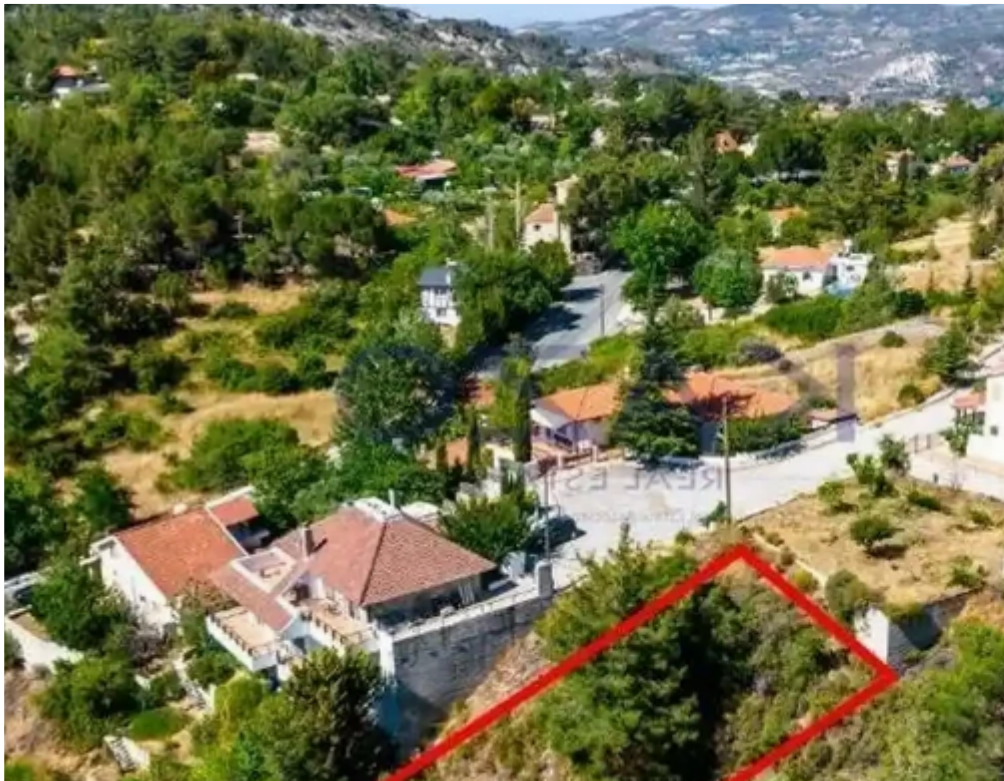
Residential land 543 m²

Limassol, Pera-Pedi-4779 , Cyprus

Offered at: € 44,000

Estate ID: 72161

Ref: ba5417788





Total plot's-land's area: **543 m²**



Coverage: **20 %**



Density: **30 %**



Available from: **2024-10-25**



Offered at: **44,000**



Type: **Residential**

""""The property is a residential plot in Pera Pedi. It is located 750m from the center of the village and 2.5km from Koilani village. It abuts on a registered, dead-end road and it has a road frontage of 15m. It has a total land area of 543sqm. The immediate area of the property is mainly characterized by newly residential developments such holiday homes. """"...

Estate on map:



