



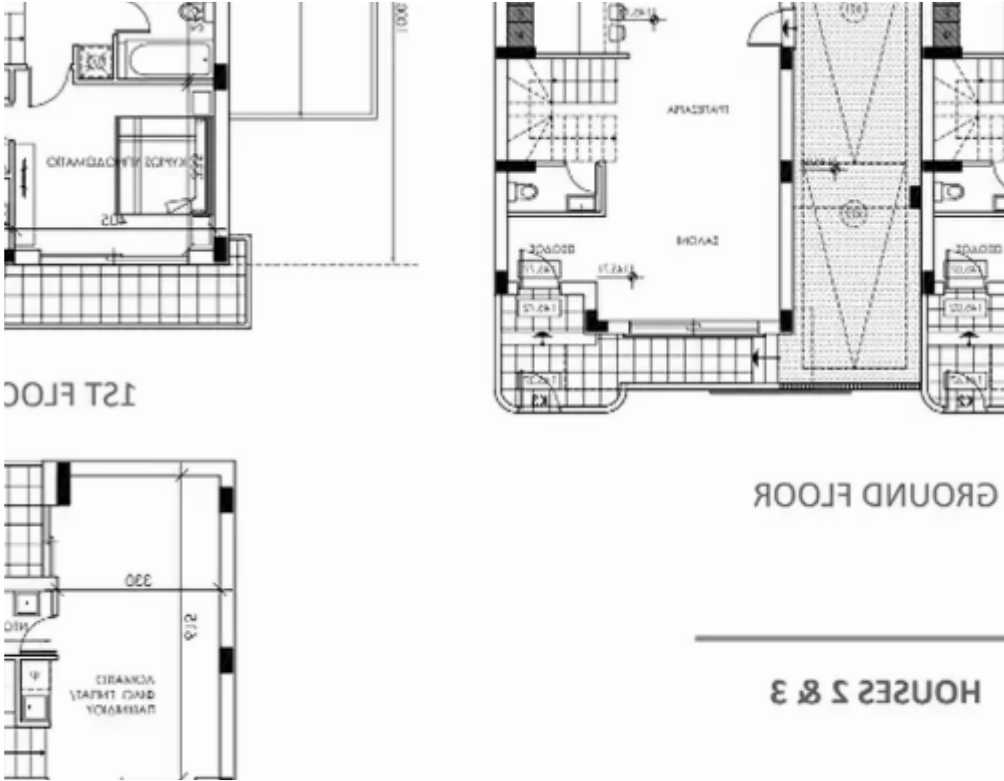
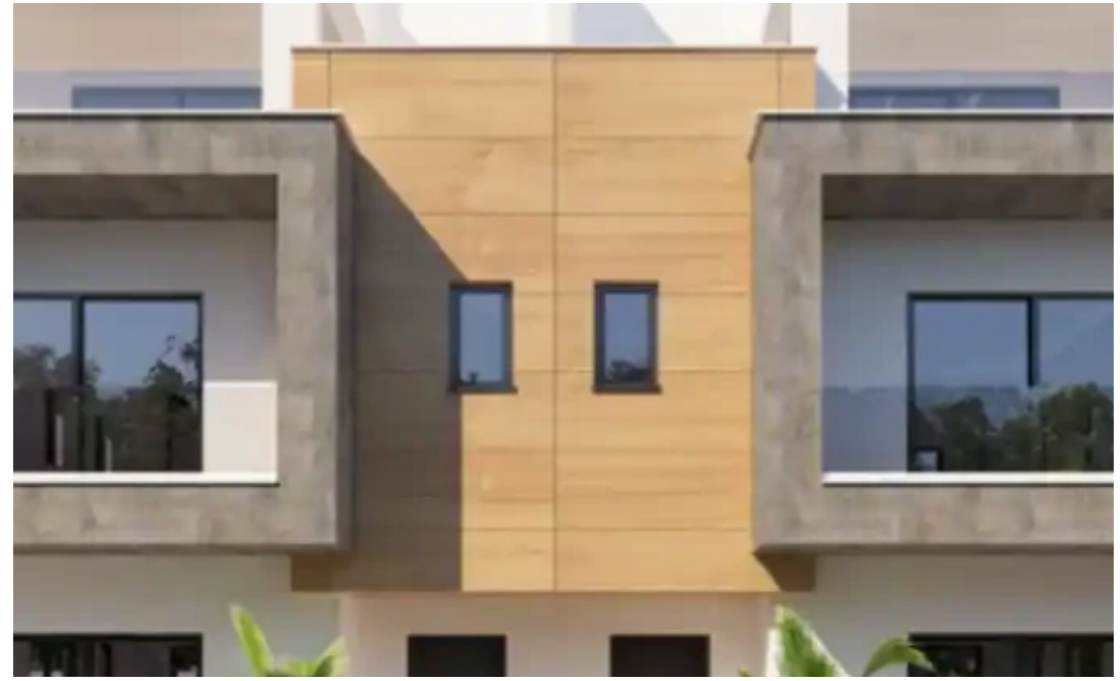
## 3-bedroom semi-detached for sale

Limassol, Patriarchou-Ierosolymon-St-Ypsonas-4192 , Cyprus

**Offered at:** € 430,000

**Estate ID:** 72499

**Ref:** ba4865466





NET internal area: **185**



Bedrooms: **3**



Parking spaces: **Covered cars**



Available from: **2024-10-25**



Offered at: **430,000**



Type: **SemidetachedHouse**

""""""ONE LINEAR COMPLEX OF 8 LUXURIOUS HOUSES. EACH HOUSE IS UNIQUE IN ITS OWN WAY. THEY ALL CONSIST OF A LIVING AND DINING ROOM, KITCHEN, TWO BEDROOMS, TWO BATHROOMS, LAUNDRY AND A FRONTAL VERANDA. EACH HOUSE HAS ITS OWN PARKING SPACE AND ITS OWN BARBECUE. HOUSE TYPE SEMI-DETACHED FLOORS 3 COVERED PARKING (m2) 20 UNCOVERED PARKING (m2) 13 Delivery Date: 3 months..""""""...

# Estate on map:

