



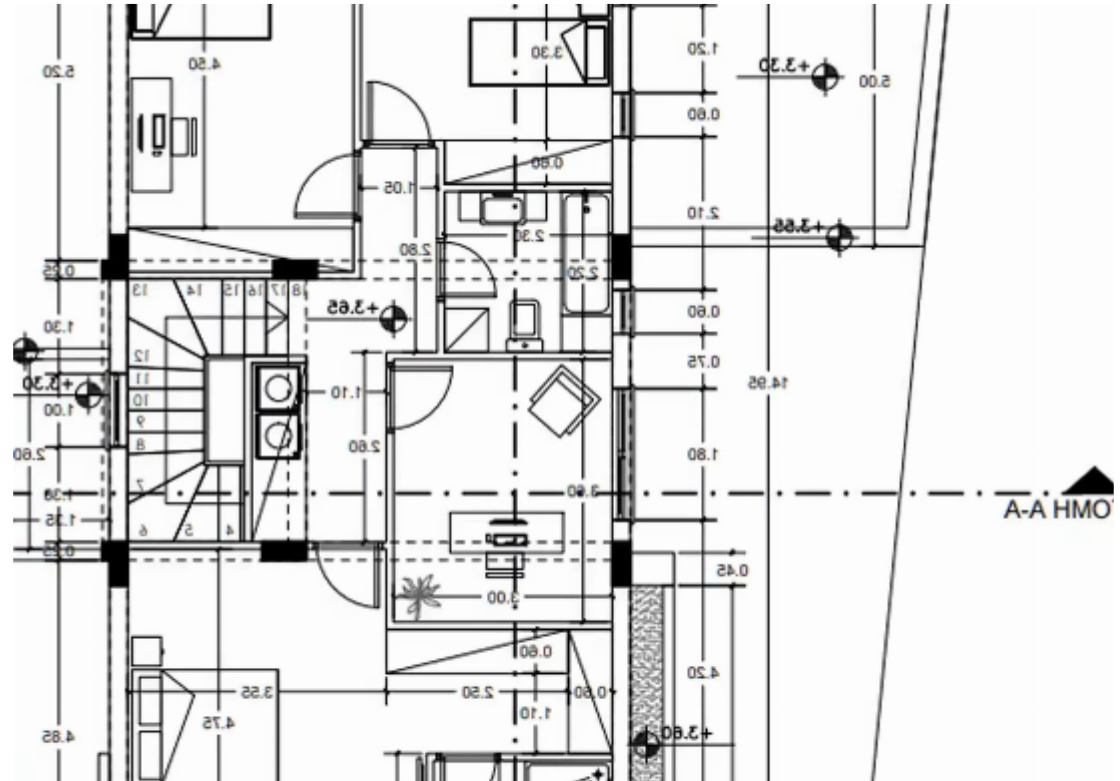
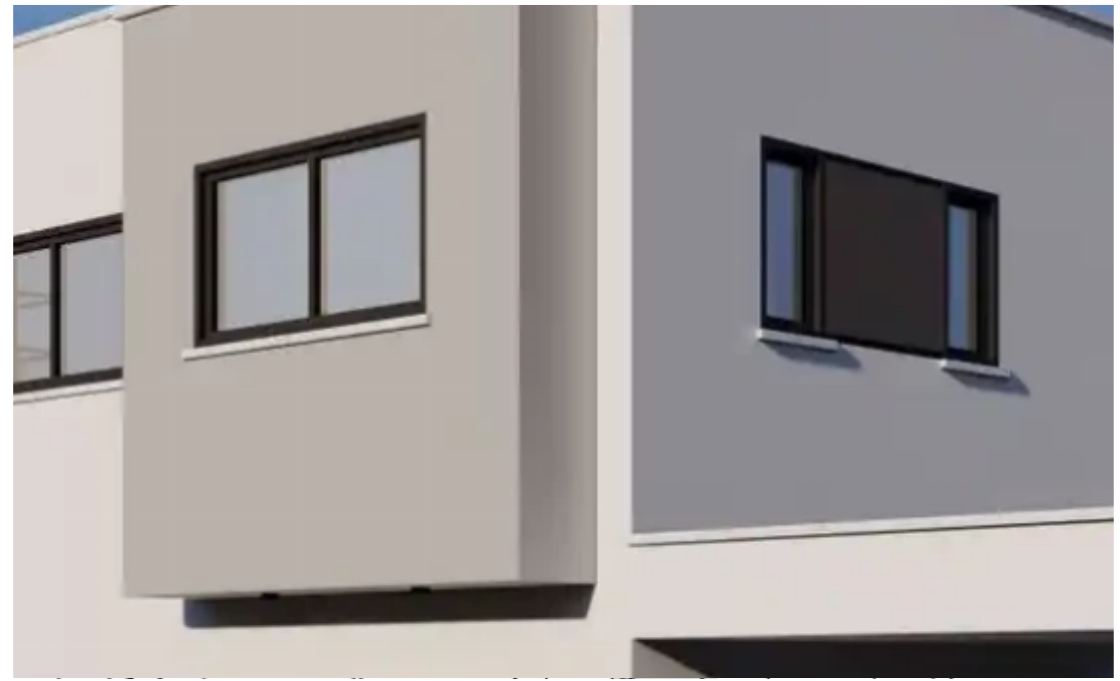
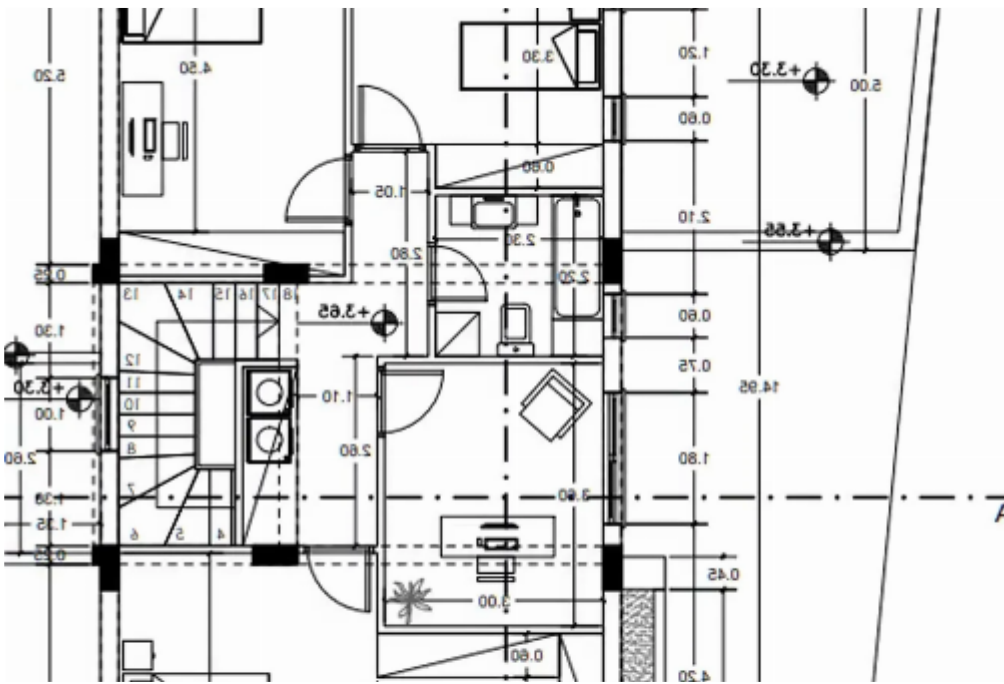
## 4-bedroom detached house for sale

Limassol, Pano-Polemidia-4130 , Cyprus

**Offered at:** € 520,000

**Estate ID:** 72535

**Ref:** ba5095021





NET internal area: **190**



Bathrooms: **3**



Bedrooms: **4**



Parking spaces: **Covered cars**



Available from: **2024-10-25**



Offered at: **520,000**



Type: **PrivateHouse**

""""""A contemporary detached home in upscale Ekali, with quick access to several private schools, the highway and city centre, featuring: • 3 bedrooms incl. an en suite master with walk-in wardrobe • Home office/optional 4th bedroom • Main bathroom & guest WC • Open floor plan • Provisions for all white goods, A/C and electric C/H • PV panels • Covered parking • Formal & informal living room • Optional pool • Quick highway access • Estimated delivery: middle-end '25 Dimensions: • Internal area: 199m<sup>2</sup> • Covered verandas: 23.5m<sup>2</sup> • Plot: 271m<sup>2</sup> This family home is scheduled for completion in the middle of next year. The property is situated in upscale...

# Estate on map:



