



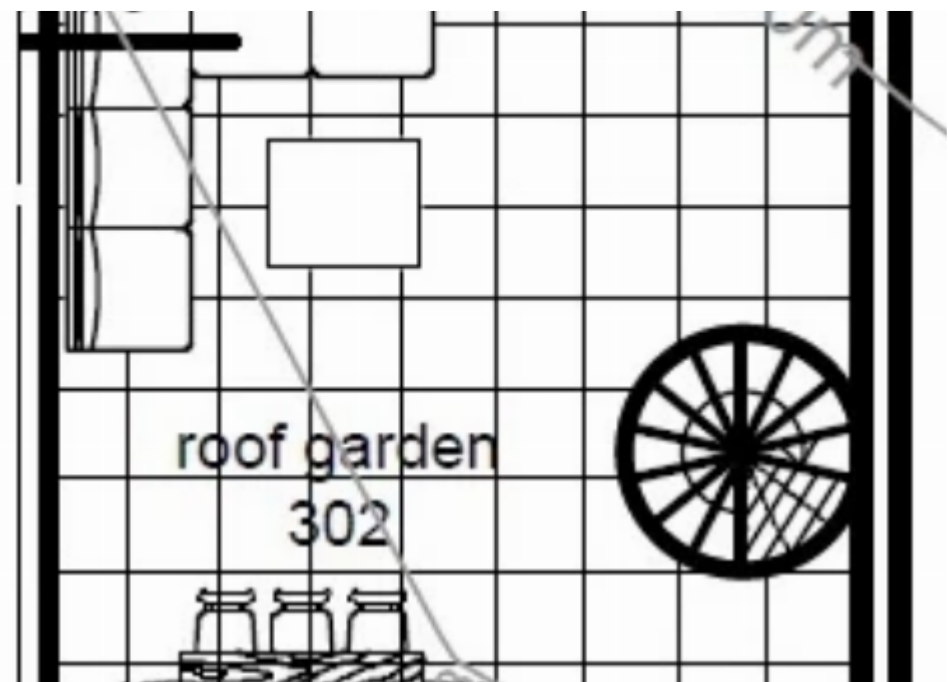
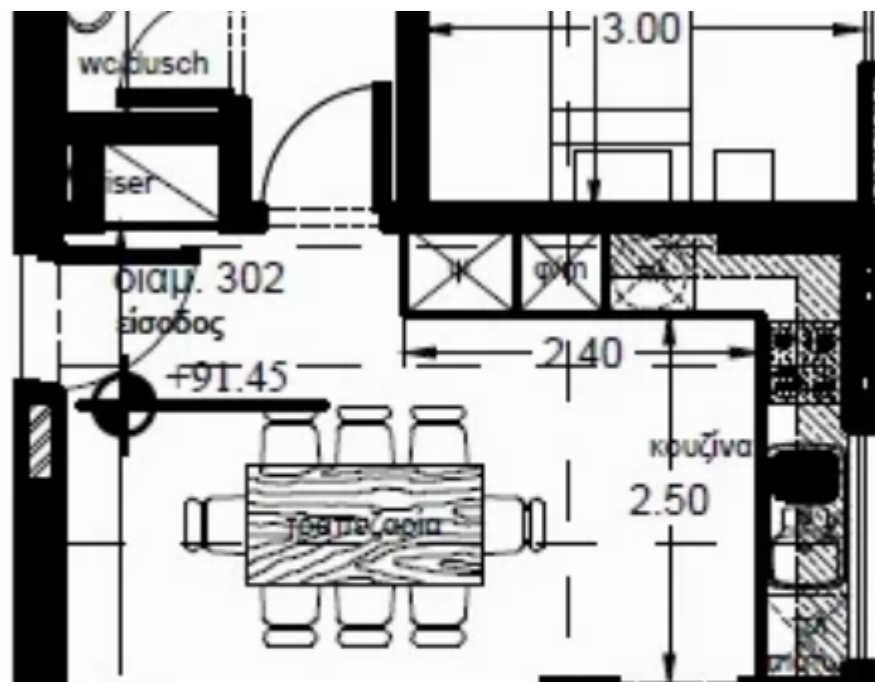
## 2-Bedroom Penthouse with Expansive Roof Garden

Limassol, Spyrou-Kyprianou-Ave-Kapsalos-3083 , Cyprus

**Offered at:** € 425,000

**Estate ID:** 7272

**Ref:** MLS-70605





Bathrooms: **2**



Bedrooms: **2**



Parking spaces: **1 cars**



Available from: **2025-08-19**



Offered at: **425,000**



Type: **Penthouse**



Veranda: **21 m²**

Elevate your lifestyle in this brand-new penthouse sanctuary, perched on the 3rd floor of a premium energy-efficient development (Category A) in Limassol's vibrant Kapsalos district. Delivering in 2026, this residence combines architectural finesse with unparalleled outdoor living. ?Property Highlights:Bedrooms & Bathrooms: ;2 spacious bedrooms with 2 luxurious ensuite bathroomsElegant Interior: ;75 sqm net indoor space featuring designer finishes and premium materialsOutdoor Paradise: ;21 sqm covered veranda + exclusive 45 sqm private roof garden ?Practical Additions: ;4 sqm storage + 1 dedicated parking spacePrime Urban Location:Nestled on Spyrou Kyprianou Avenue (3083), enjoy:...

## Estate on map:





