



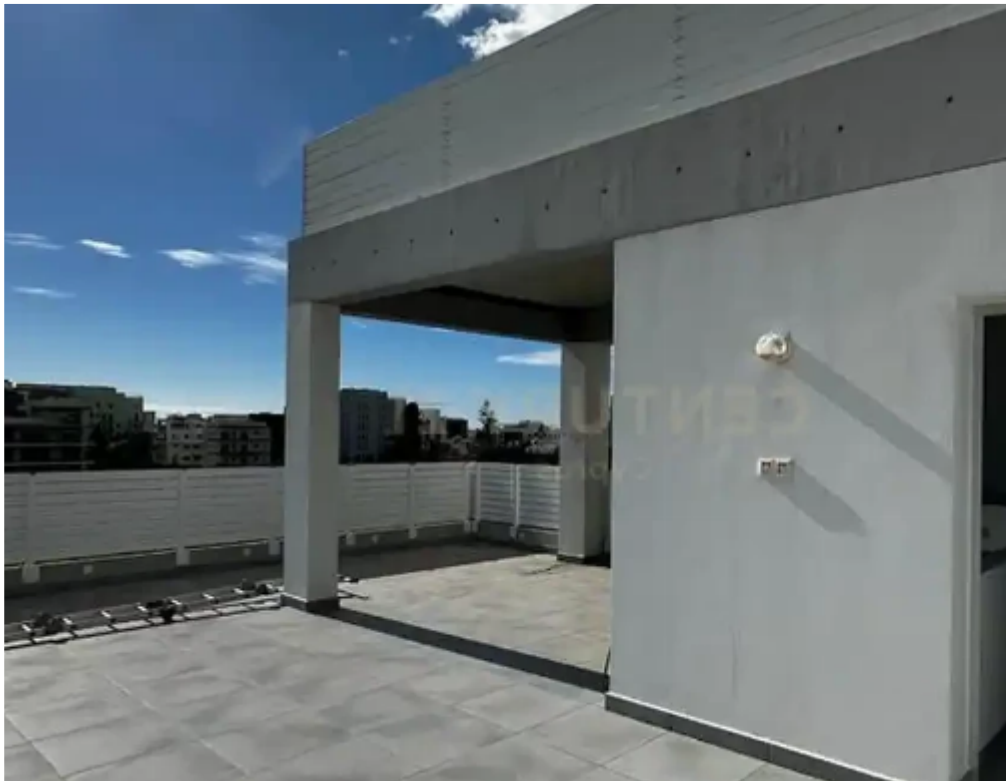
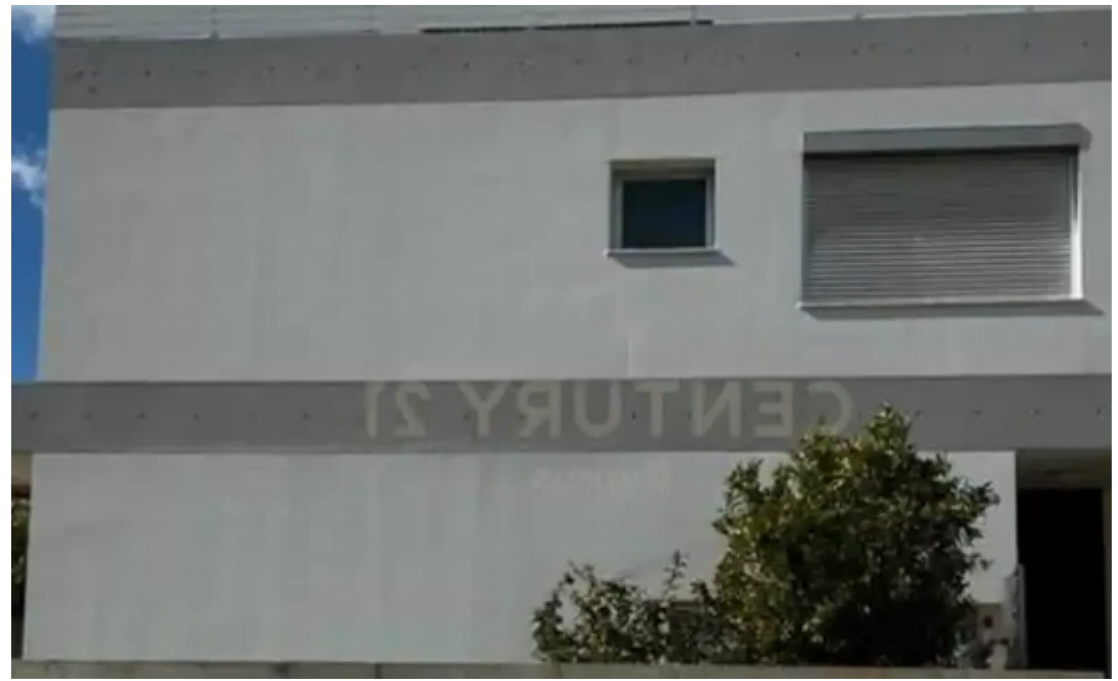
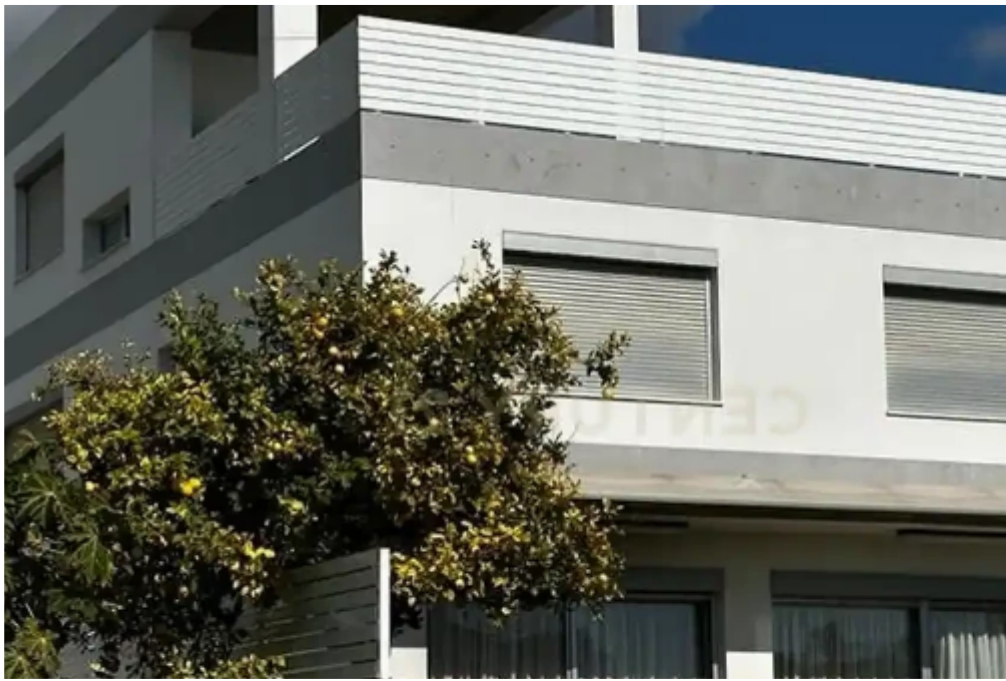
6-bedroom semi-detached for sale

Limassol, Old-Bridge-And-Royal-Gardens-Potamos-Germasogeias-4041 , Cyprus

Offered at: € 1,500,000

Estate ID: 73370

Ref: ba5290198





NET internal area: **244**



Bathrooms: **3**



Bedrooms: **5**



Parking spaces: **Uncovered cars**



Available from: **2024-10-25**



Offered at: **1,500,000**



Type: **SemidetachedHouse**

""""""""A modern 6 bedroom semi-detached house designed to offer a beautiful blend of comfort and modern aesthetics. Situated in a quiet neighbourhood in one of the most popular areas of the city just a short distance away from seaside and in close proximity to all amenities. The ground floor consists of a spacious living room with a view to the garden, dining and kitchen area with all electrical appliances included, a guest toilet, and a GYM room. The first floor has a master bedroom with an en-suite bathroom, and 3 bedrooms, family bathroom, and laundry station. On a spacious roof garden with an office and barbecue area you can enjoy the sea and the city view with your friends and family....

Estate on map:

