



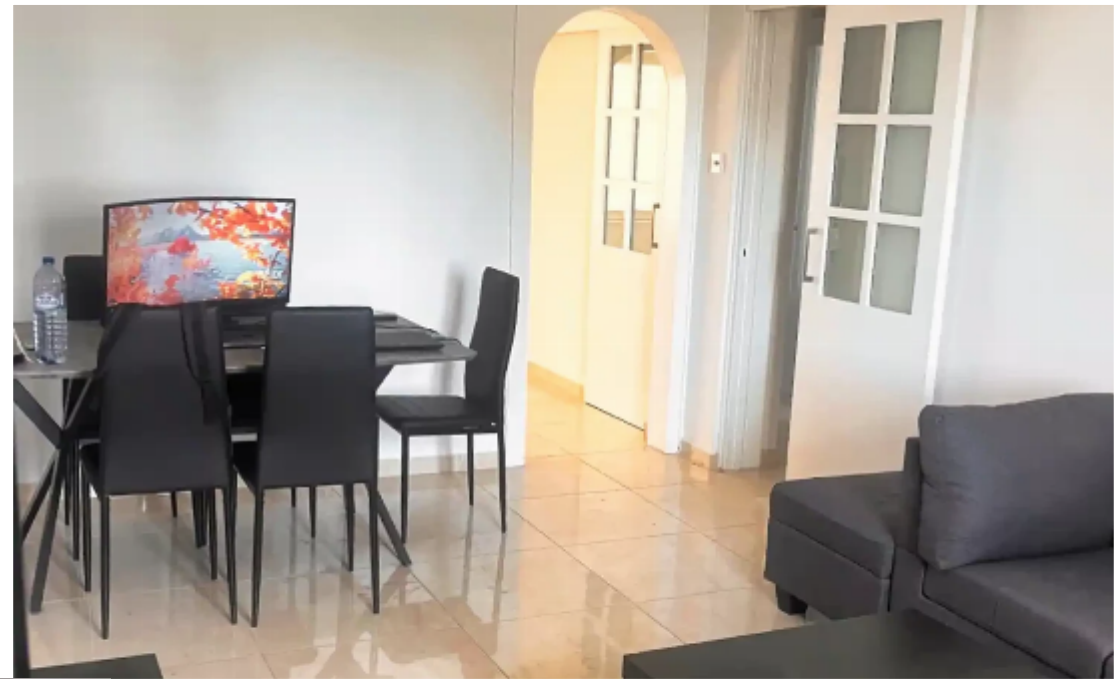
2-bedroom apartment f?r s?le

Limassol, Super-Home-Center-Timou-Prodromou-Mesa-Geitonia-4004 , Cyprus

Offered at: € 210,000

Estate ID: 73966

Ref: ba5425006





NET internal area: **79**



Bathrooms: **1**



Bedrooms: **2**



Parking spaces: **Uncovered cars**



Available from: **2024-10-26**



Offered at: **210,000**



Type: **Apartment**

Located in the peaceful and highly desirable Green Area near Germasoglia, this charming 2-bedroom apartment offers both tranquility and convenience. Situated just 230 meters from the nearest supermarket and 340 meters from a pharmacy, daily essentials are only a short walk away. For those who enjoy an active lifestyle, there are three gyms located within a 500-meter radius. Despite its quiet surroundings, the apartment provides easy access to the bustling city center of Limassol, making it ideal for both professionals and families. The apartment spans a covered area of 69 square meters, with an additional 10 square meters of enclosed verandas that have been transformed into functional ...

Estate on map:

