



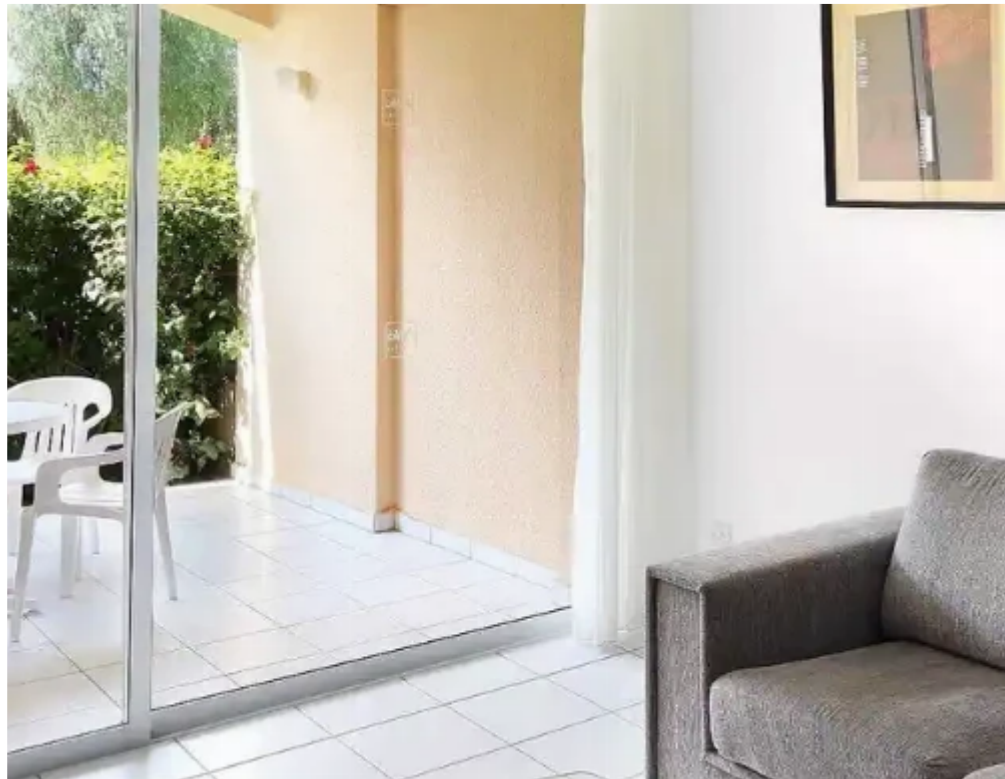
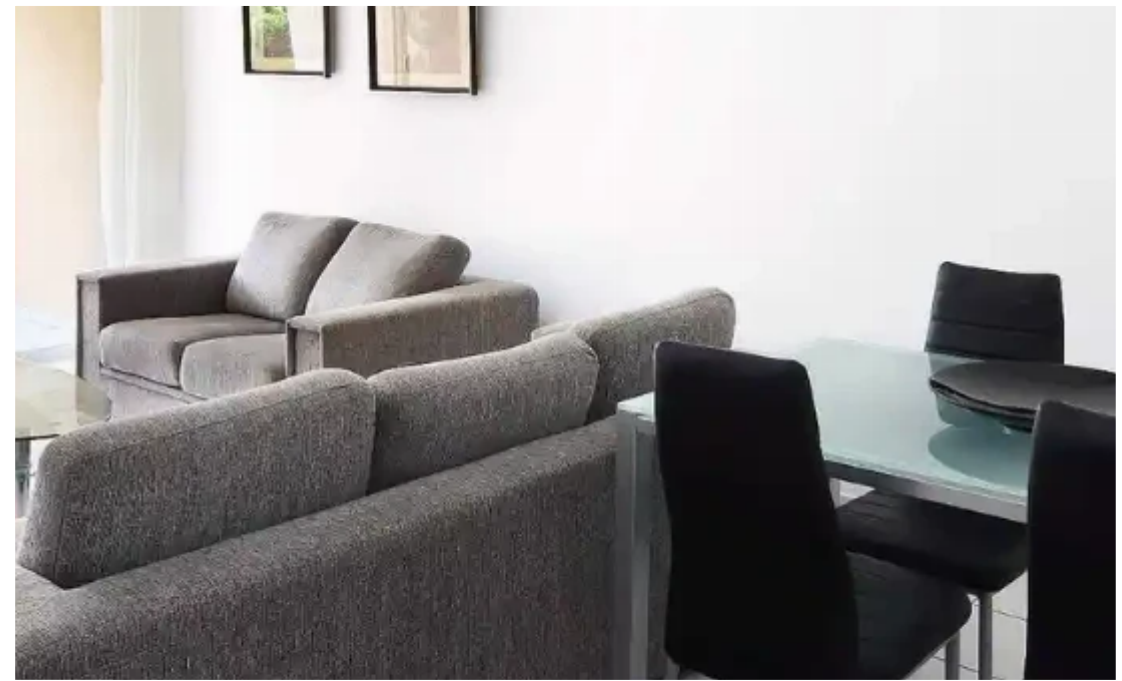
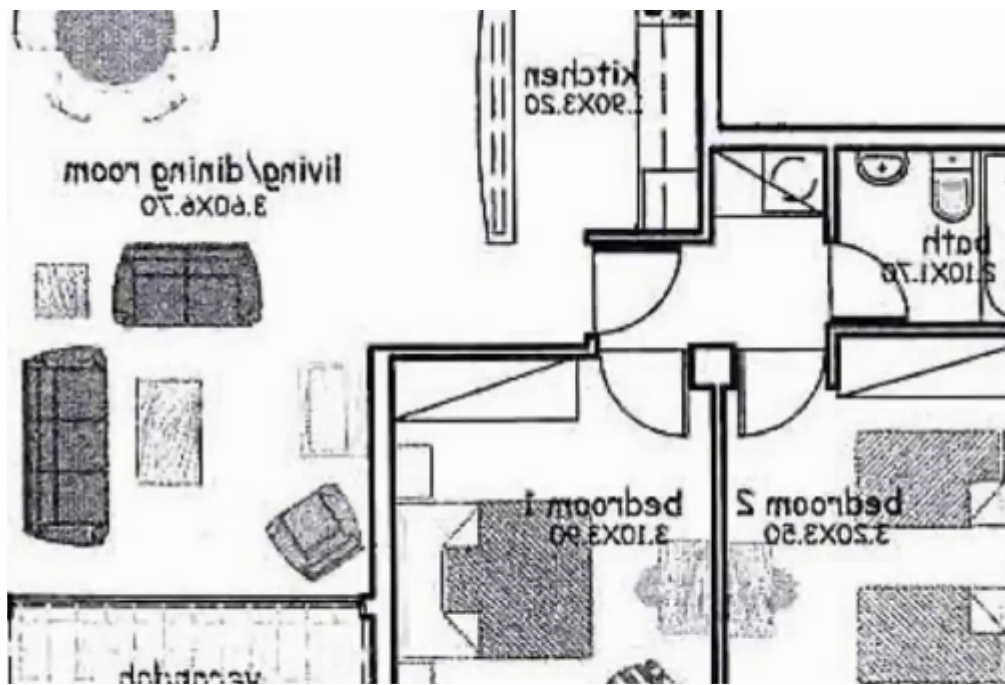
2-bedroom apartment f?r s?le

Paphos, Polis-Chrysochous-Prodromi-Latsi-8820 , Cyprus

Offered at: € 180,000

Estate ID: 75049

Ref: ba4783454





Bathrooms: **1**



Bedrooms: **2**



Available from: **2024-10-27**



Offered at: **180,000**



Type: **Apartment**

*****"This beautifully designed 2-bedroom apartment combines traditional character with modern convenience. Featuring a charming Mediterranean design and an open-plan layout, it offers a comfortable and peaceful living environment. The apartment is move-in ready and VAT exempt, making it an ideal choice for those seeking immediate occupancy and value. Details: -2-bedroom apartment -One bathroom -Total covered area of 100 square meters -Open-plan living and dining areas, with a partially open-plan kitchen. -Traditional design featuring natural stonework exteriors, arches, and marble balustrades. -Furniture included Amenities: -Two large residents' swimming pools equipped w...

Estate on map:



