



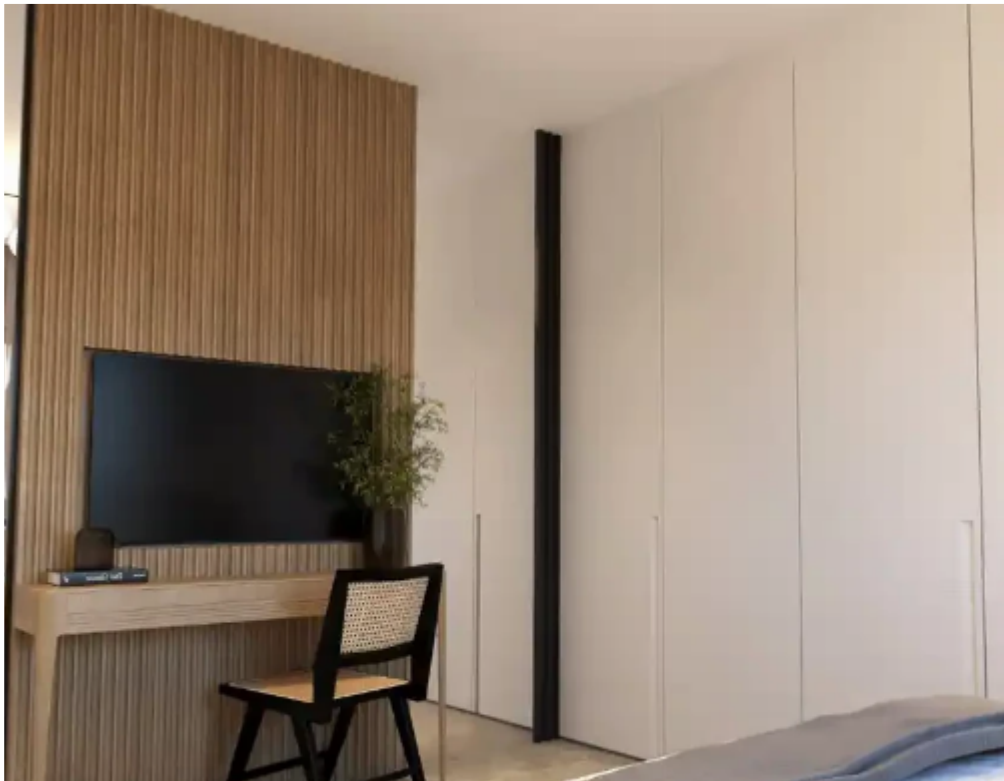
## 2-bedroom apartment f?r s?le

Limassol, Erimi-4630 , Cyprus

**Offered at:** € 235,000

**Estate ID:** 75054

**Ref:** ba5361848





Bathrooms: **2**



Bedrooms: **2**



Parking spaces: **No cars**



Available from: **2024-10-27**



Offered at: **235,000**



Type: **Apartment**

.....Nestled in the serene village of Erimi, Cyprus, the project exude a blend of modern comfort and tranquil living. Each unit is meticulously crafted to offer a blend of contemporary aesthetics and functionality, ensuring a comfortable living experience for all. One of the standout features of the project is the inclusion of a parking space and storage room for each apartment, providing residents with the convenience and peace of mind they deserve.

Beyond its immediate comforts, the project boast easy access to the highway, seamlessly connecting residents to all corners of Cyprus. Year of Construction: November 2025....."



