



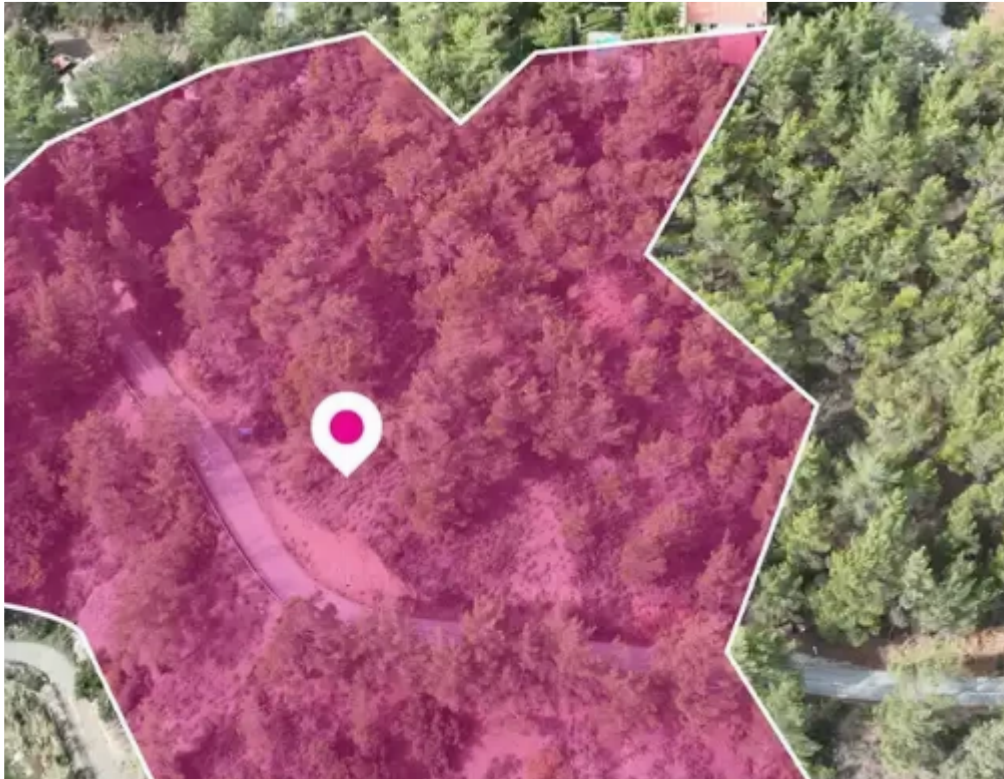
Residential land 2217 m²

Limassol, Pera-Pedi-4779 , Cyprus

Offered at: € 52,000

Estate ID: 75639

Ref: ba5030104





Total plot's-land's area: **2217 m²**



Available from: **2024-10-27**



Offered at: **52,000**



Type: **Residential**

""17% share of a residential field of 13.044 sq.m. in total. Access to the field is via a registered road with a total frontage of approximately 54m. The asset is located approximately 4km from B8 motorway and approximately 1.1 from Pera Pedi community centre. The property falls within Zone H7, with a building coefficient of 15%, coverage of 15%, and permission for 2 floors (8.3m) of construction. GPS coordinates: 34.864929, 32.869991""...

Estate on map:



