



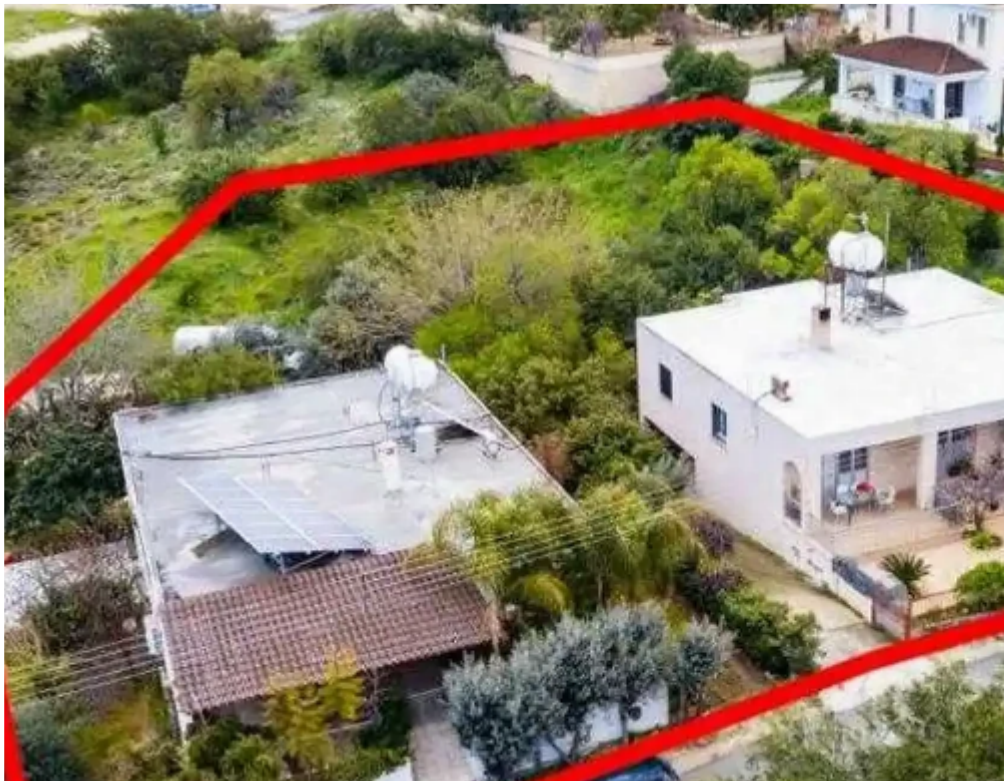
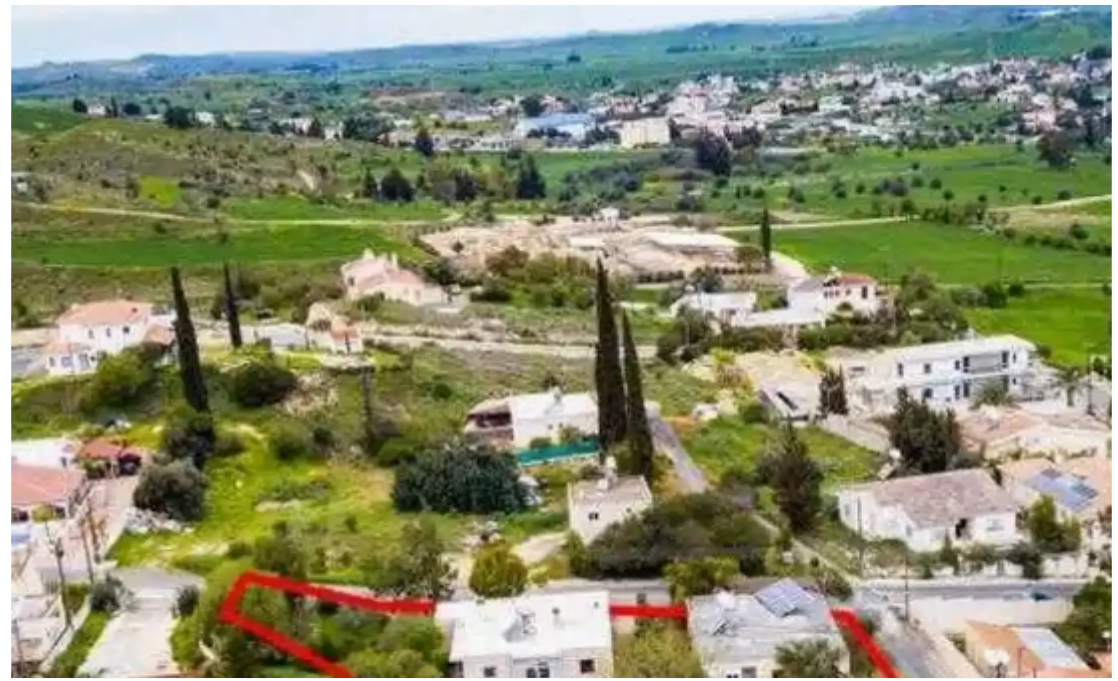
## Residential land 2455 m<sup>2</sup>

Nicosia, Dali-2540 , Cyprus

**Offered at:** € 60,000

**Estate ID:** 75833

**Ref:** ba4955208





Total plot's-land's area: **2455 m<sup>2</sup>**



Coverage: **50 %**



Density: **90 %**



Available from: **2024-10-27**



Offered at: **60,000**



Type: **Residential**

""""The asset is a 33% share of a residential field in Dali, located 700m from the centre of the community. It is in close in proximity to amenities such as school, athletic centre, supermarkets, restaurants and cafes. The field has a total area of 2,455sqm and benefits from a combined road frontage of 90m."""" ...

## Estate on map:

