



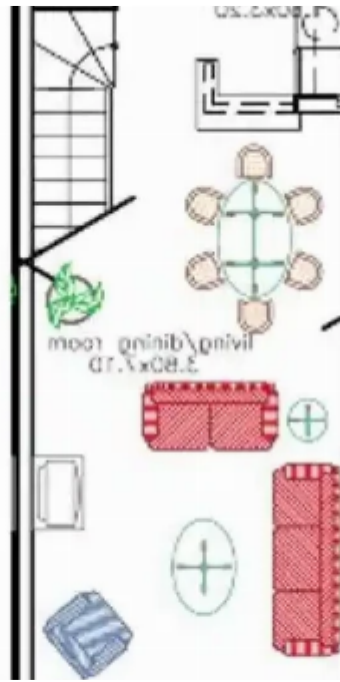
2-bedroom semi-detached for sale

Paphos, Polis-Chrysochous-Prodromi-Latsi-8820 , Cyprus

Offered at: € 190,000

Estate ID: 75984

Ref: ba5360123





Bathrooms: **2**



Bedrooms: **2**



Available from: **2024-10-27**



Offered at: **190,000**



Type: **SemidetachedHouse**

.....This beautifully designed 2-bedroom apartment combines traditional character with modern convenience. Featuring a charming Mediterranean design and an open-plan layout, it offers a comfortable and peaceful living environment. The apartment is move-in ready and VAT exempt, making it an ideal choice for those seeking immediate occupancy and value. Details: -2-bedroom townhouse with a covered area of 91 square meters. -Features 2 en-suite bathrooms for privacy and convenience. -Open-plan living and dining areas with partially open-plan kitchens. -Traditional Mediterranean design featuring natural stonework, arches, and marble balustrades. Amenities: -Two large residents&...

Estate on map:

image not found or type unknown



