



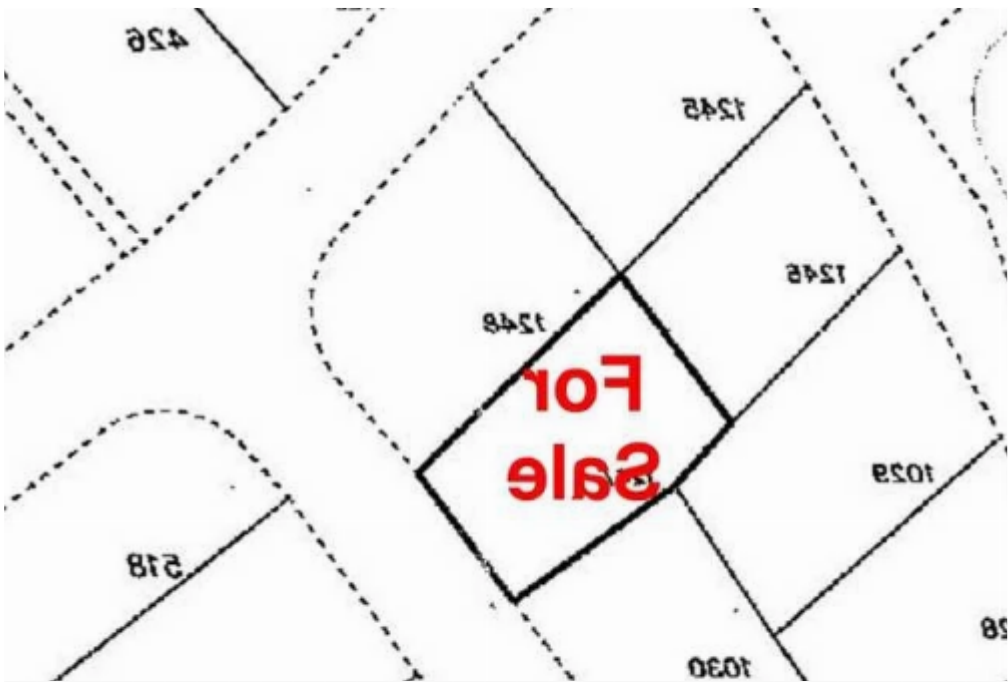
Residential land 546 m²

Paphos, Primary-Schoold-Geroskipou-8200 , Cyprus

Offered at: € 259,000

Estate ID: 76644

Ref: ba5502280





Total plot's-land's area: **546 m²**



Coverage: **50 %**



Density: **100 %**



Available from: **2024-10-31**



Offered at: **259,000**



Type: **Residential**

""Located in the new popular residential area of Yeroskipou. Ideal purchase for every investor and potential homeowner. Title deed . Corner plot also available (661sqm) The plots are situated on the west end of Yeroskipou 300m off the main road and within minutes of all amenities.

These plots provides a unique opportunity to build spacious homes or apartments of up to three floors with commercial outlets. Nearby Amenities: - Paphos International Airport 15min - Beach 9min - Paphos Harbor 10min - Highway 5min - Medical Centre 3min""...

Estate on map:

