



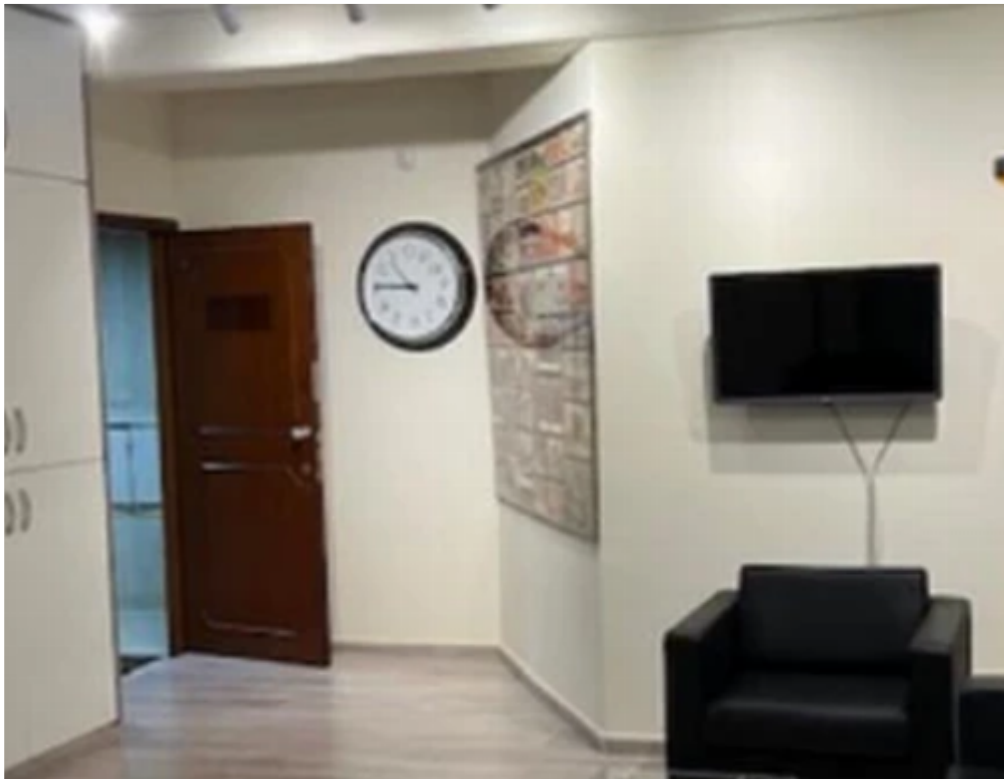
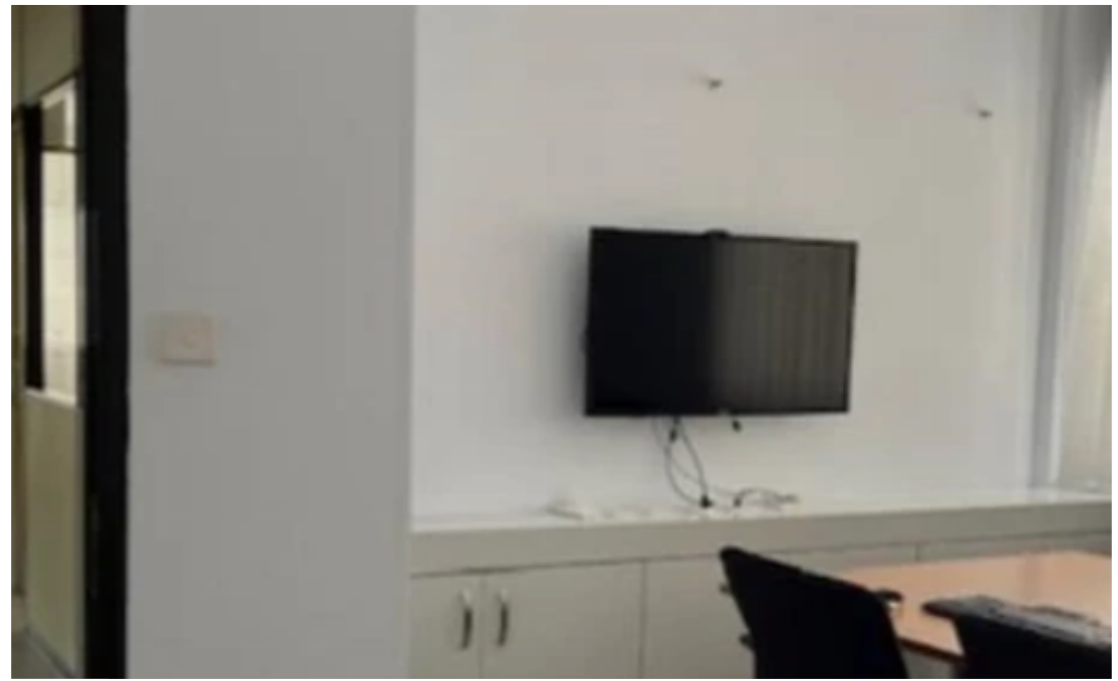
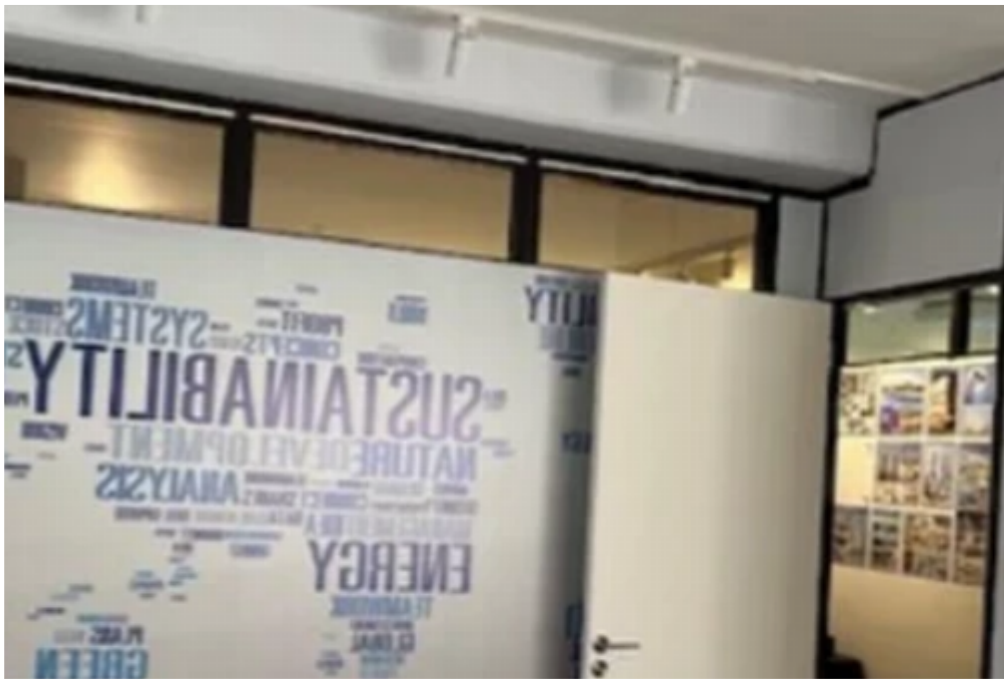
## Office in historical center, limassol

Limassol, Griva-Digeni-Neapoli-3101 , Cyprus

**Offered at:** €2,500

**Estate ID:** 77812

**Ref:** ba5518829





NET internal area: **138**



Available from: **2024-11-07**



Offered at: **2,500**



Type: **Office**

""""""The office is on the first floor, facing South-towards the complex parking area & the hotel. The office area is 138 sq.m. The office has one private parking space in the basement. Access into the complex area is by access barrier gate control. The office building as well as the complex has CCTV monitoring cameras. The office is rented complete with all furniture A/C, Lighting, Partitions including separate kitchenette (c/w fridge, cutlery including a high quality RO drinking water filter unit. Including one separate toilet room and separate store room. Both the kitchenette and store rooms have individual automatic fire extinguishing units. The office has adequate power outlets and t...

# Estate on map:



