

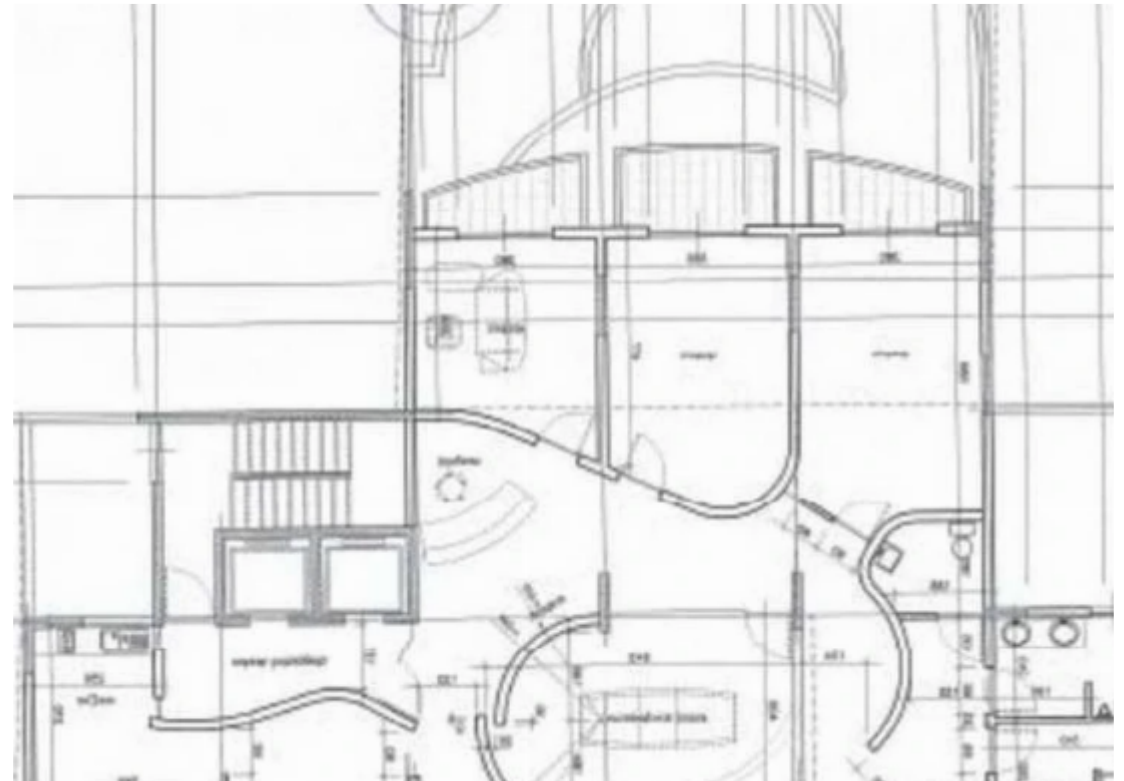
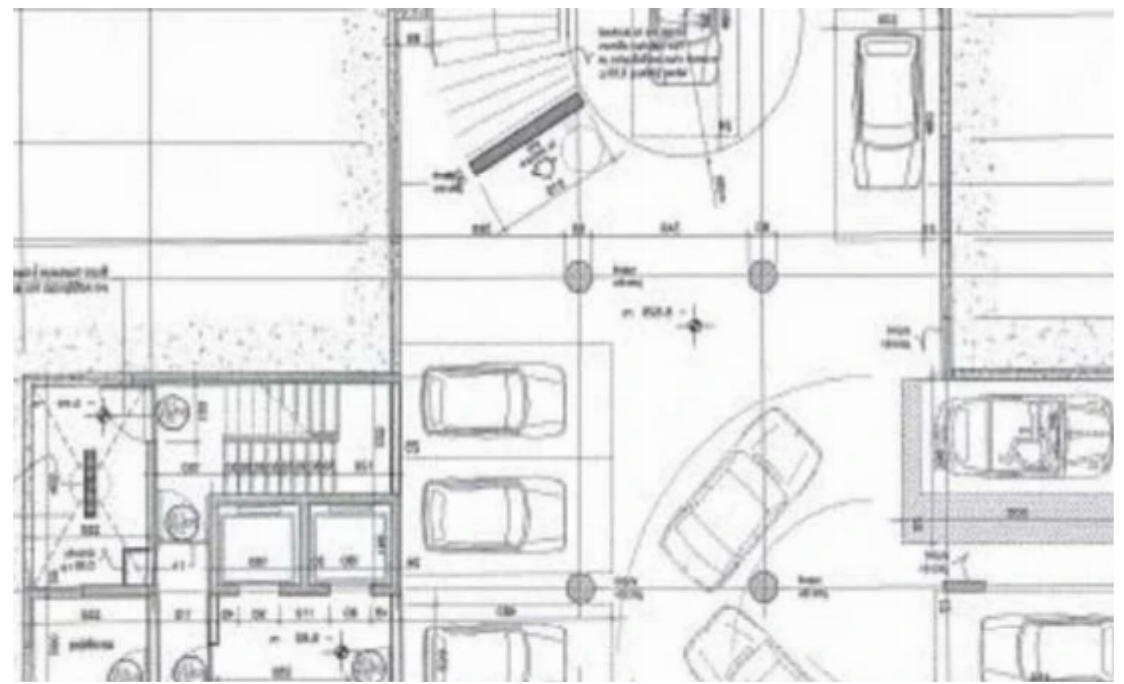
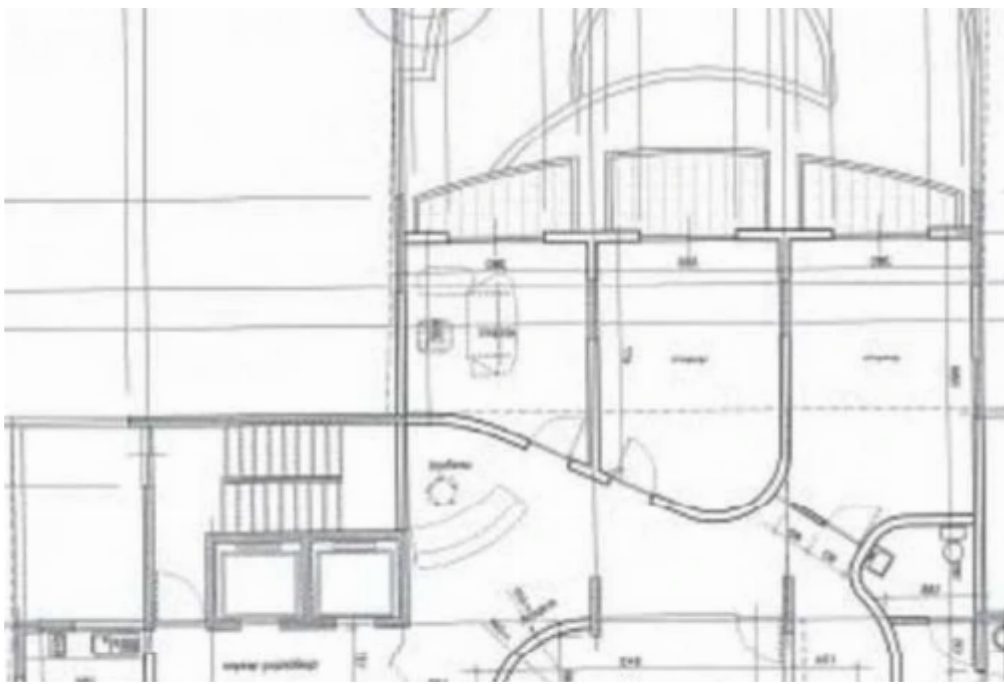
## 2020m<sup>2</sup> commercial building

Limassol, Ellados-St-Agora-Katholiki-3041 , Cyprus

**Offered at:** € 65,000

**Estate ID:** 82609

**Ref:** ba5538720





Available from: **2024-11-21**



Offered at: **65,000**



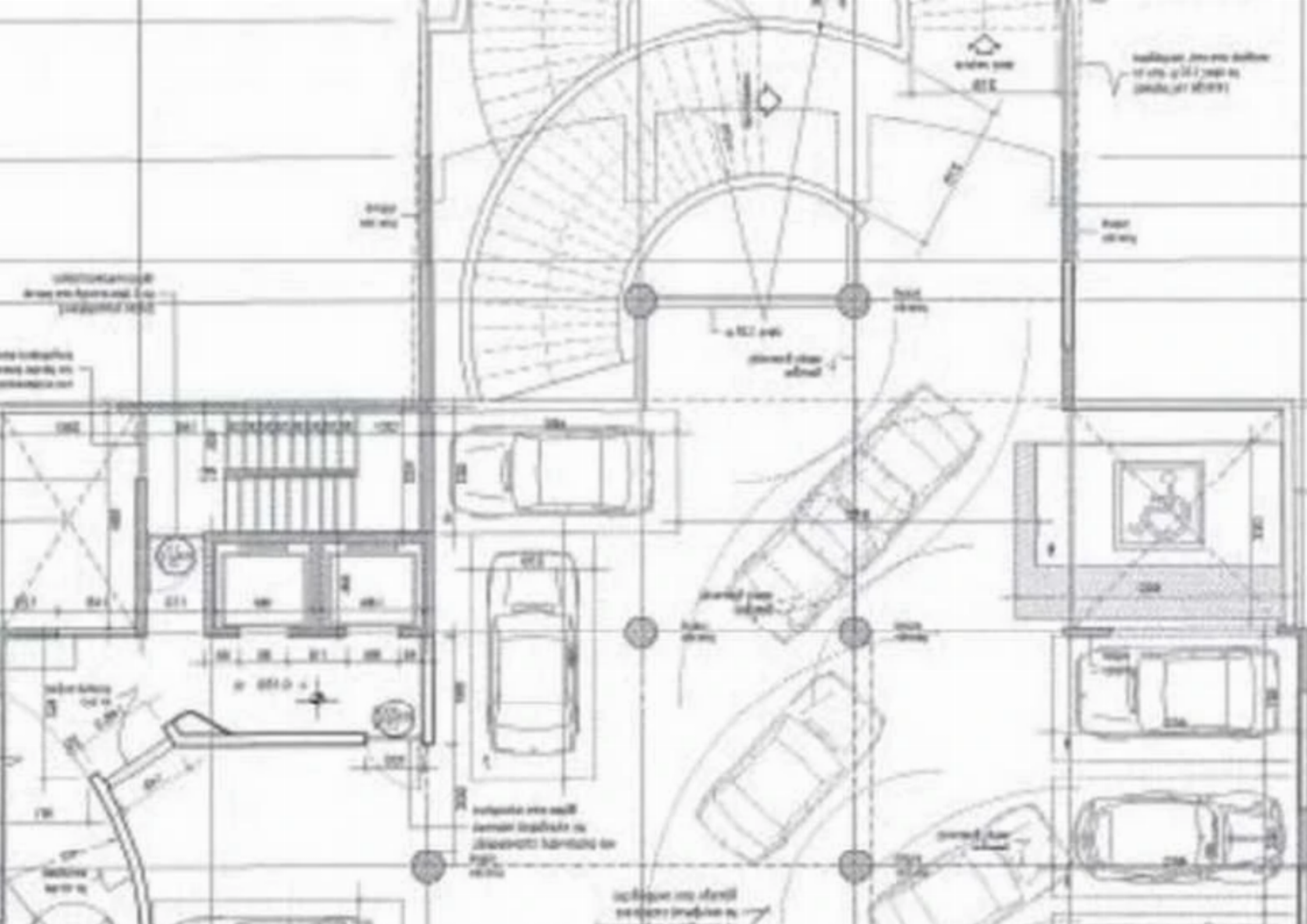
Type: **Space**

""""""Recently renovated commercial building in the heart of Limassol, featuring: • 2 underground parking levels • Ground floor parking • 2 elevators • Ground floor lobby • 4 office floors, each with a reception area, 9 offices, 2 filing rooms, a conference room, kitchen and WC • 5th office floor with 2 offices, reception area, conference room, 2 filing rooms, kitchen and WC • 26 parking spaces total • Total area: 2020m<sup>2</sup> A sophisticated commercial building with ample parking and storage facilities and a very attractive façade, in the heart of the city."""""...

## Estate on map:

image not found or type unknown





Yükseklik: 3,00 m  
1/100 ölçeğinde  
çizilmiştir.

Yükseklik: 3,00 m  
1/100 ölçeğinde  
çizilmiştir.

Yükseklik: 3,00 m  
1/100 ölçeğinde  
çizilmiştir.

Yükseklik: 3,00 m  
1/100 ölçeğinde  
çizilmiştir.

Yükseklik: 3,00 m  
1/100 ölçeğinde  
çizilmiştir.

Yükseklik: 3,00 m  
1/100 ölçeğinde  
çizilmiştir.