



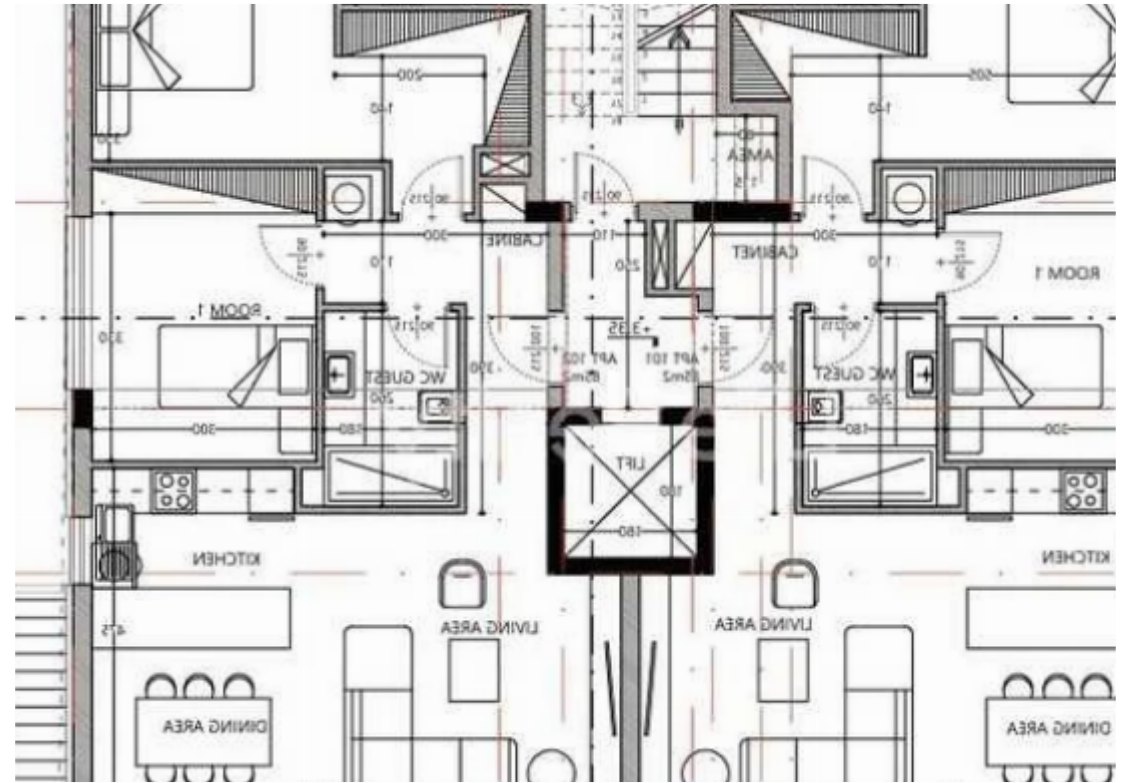
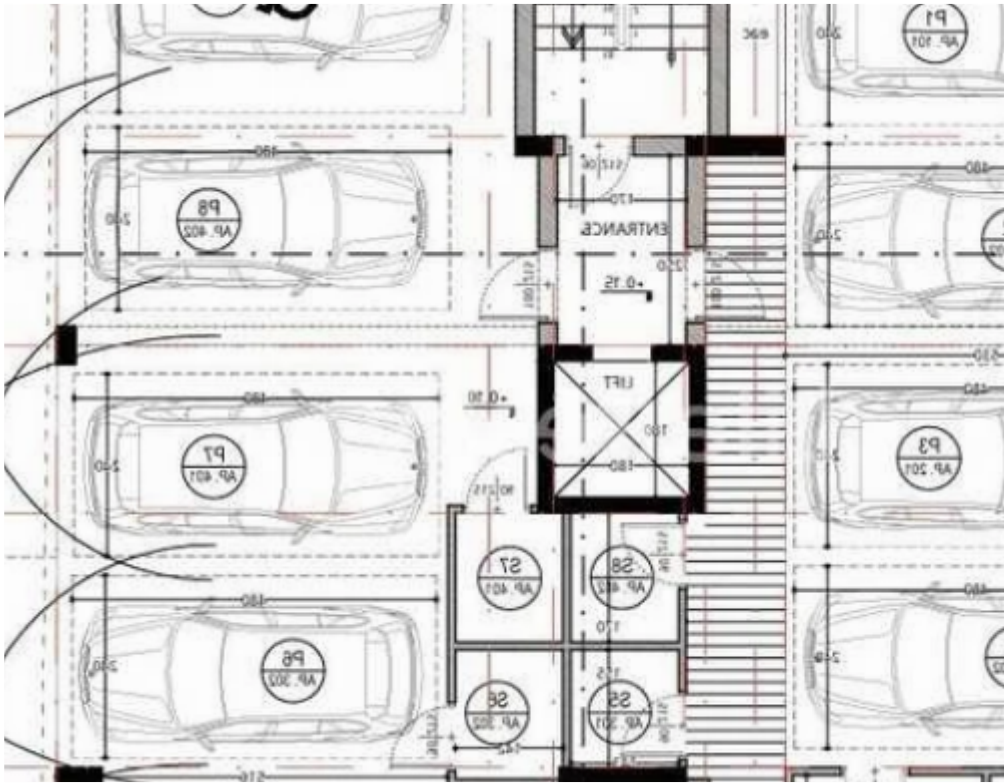
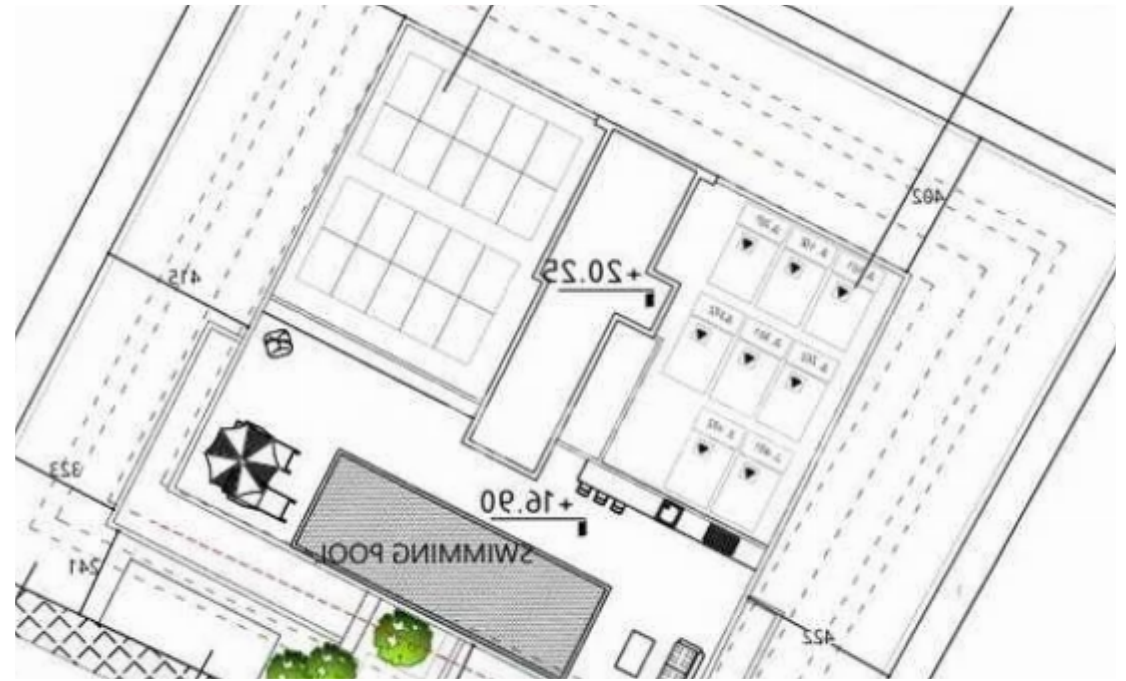
Residential land 503 m²

Limassol, Arch-Makariou-Iii-Ave-Agios-Nektarios-3095 , Cyprus

Offered at: € 1,150,000

Estate ID: 90657

Ref: ba5569287





Total plot's-land's area: **503 m²**



Coverage: **50 %**



Density: **140 %**



Available from: **2024-12-13**



Offered at: **1,150,000**



Type: **Residential**

Introducing this prime residential plot located in the prestigious Neapolis area of Limassol. This plot comes with approved planning permits for a four-floor development, comprising eight two-bedroom apartments and a roof garden with a swimming pool. Ideally positioned, it is just 200m from the beach, a 5-minute drive to the city center, and 10 minutes from the highway. Essential amenities such as schools, shops, and banks are within easy reach, adding to its appeal. Boasting a 140% building density and 50% coverage, the plot offers the potential for a modern residential project. Its flat surface and registered road access, make it a unique investment opportunity for developers an...

Estate on map:

image not found or type unknown



