



2-bedroom apartment for sale

€260.000

Limassol, Era-Apollon-Petros-And-Pavlos-3075 , Cyprus

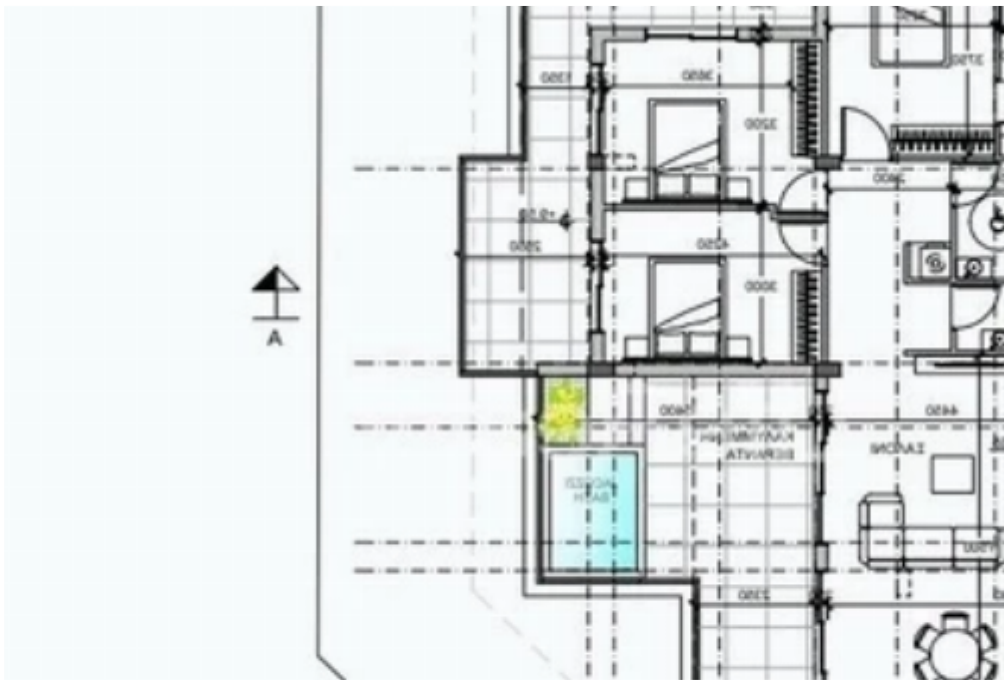
This ad is presented by listings admin, under supervision from ,

Licensed Real Estate Agent Reg no: 1234, Lic no: 603/E

Offered at: € 260,000

Estate ID: 20868

Ref: ba5115647





NET internal area: **78**



Bathrooms: **2**



Bedrooms: **2**



Parking spaces: **Covered cars**



Available from: **2024-03-30**



Offered at: **260,000**

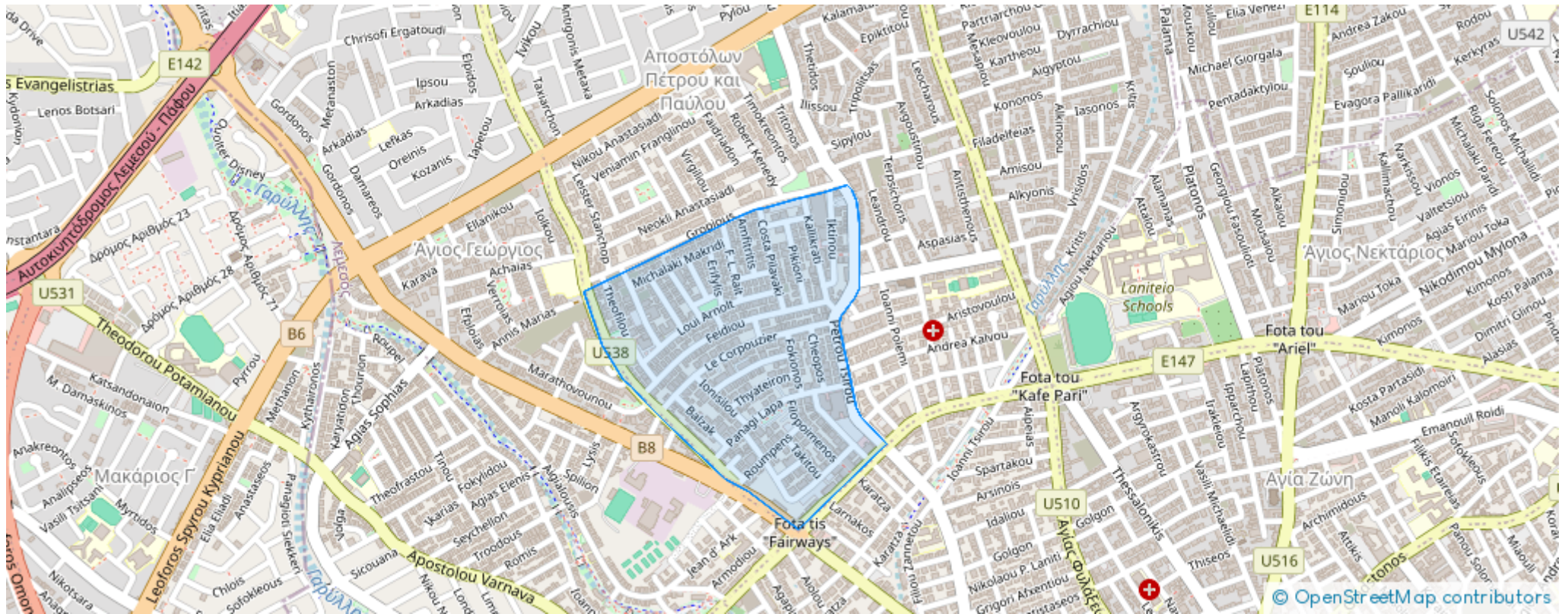


Type: **Apartment**

An exquisite development with wonderful and cozy apartments with excellent investment opportunities and high returns suitable also to be used as permanent residence. Located in the popular Petrou & Pavlou area in Limassol, close to all amenities. Available is the 1 two-bedroom apartment on the first floor and the 2 two-bedroom apartments on the second floor. This is an ultra modern apartment development, located within the heart of the city, with just a 5-minute drive from Limassol marina and with easy access to the highway. Detailed specification: Apartment 101 ? Internal area 75m2 ?

Covered verandas 12m2 Price €260,000 +VAT Apartment 201 ? Internal area 75m2 ? Covered ...

Estate on map:





Website: [realty.com.cy/p/2-bedroom-apartment-f?r-s?le-
€260.000-ba5115647](https://realty.com.cy/p/2-bedroom-apartment-f?r-s?le-€260.000-ba5115647)

Email: info@rimatech.com.cy

Phone: [+35795958898](tel:+35795958898) // [+35725714014](tel:+35725714014)

This ad is presented by listings admin, under supervision from ,
Licensed Real Estate Agent Reg no: 1234, Lic no: 603/E

