



1-bedroom apartment f?r s?le

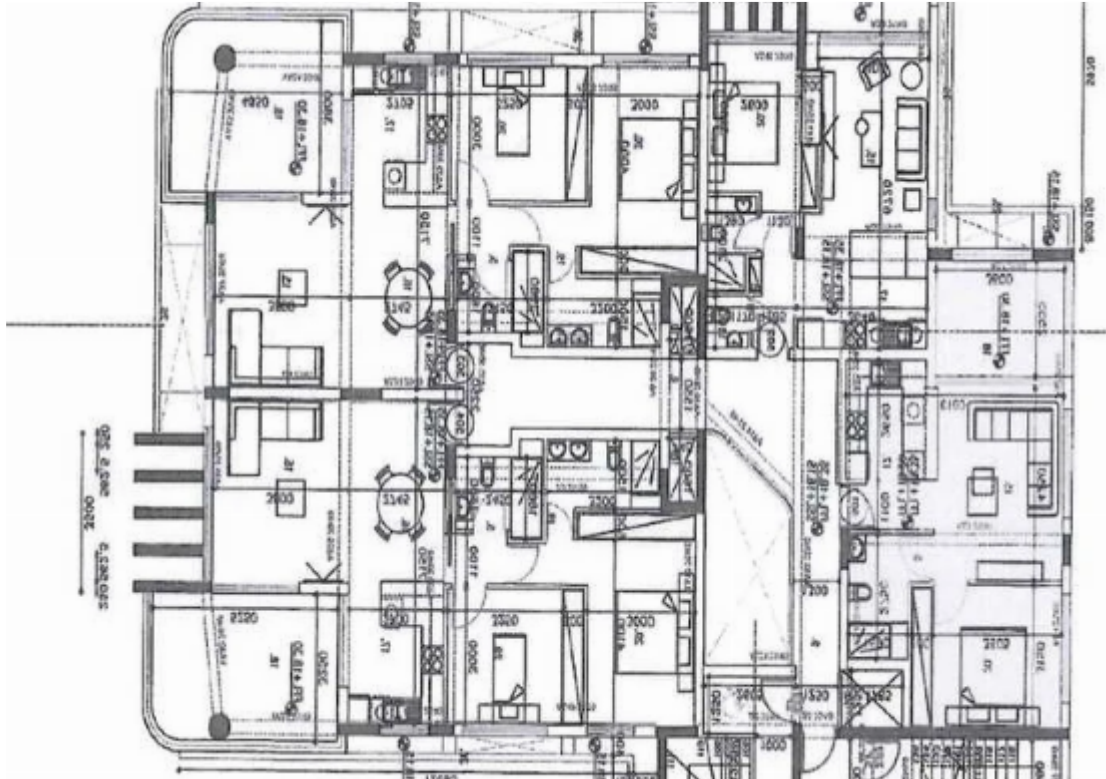
Larnaka, Kalogera-Primary-School-Skala-6021 , Cyprus

This ad is presented by listings admin, under supervision from ,
Licensed Real Estate Agent Reg no: 1234, Lic no: 603/E

Offered at: € 250,000

Estate ID: 24025

Ref: ba6053600





Bathrooms: **1**



Bedrooms: **1**



Parking spaces: **Covered cars**



Available from: **2025-12-04**



Offered at: **250,000**



Type: **Apartment**

""""""Park Avenue is the first development / construction project that Edge Development Group has undertaken in Larnaca. It is a fresh and exclusive residential investment opportunity situated in a prime location in the centre of Larnaca. This fusion of luxury design apartments and surrounding natural beauty is in close proximity to many amenities, making it the ideal opportunity to invest in a prime and future-proof real estate, with high resale and rental value. Park Avenue comprises of 10 1-Bedroom apartments, 16 2-Bedroom apartments and 1-Bedroom apartments on eight floors. The development is characterized by its extravagant architectural design and its breath-taking panoramic views ...

Estate on map:





Website: realty.com.cy/p/1-bedroom-apartment-f?r-s?le-ba6053600

Email: om@liferealty.cy

Phone: [+35795958898](tel:+35795958898) // [+35725714014](tel:+35725714014)

This ad is presented by listings admin, under supervision from ,
Licensed Real Estate Agent Reg no: 1234, Lic no: 603/E