



## 2-bedroom apartment f?r s?le

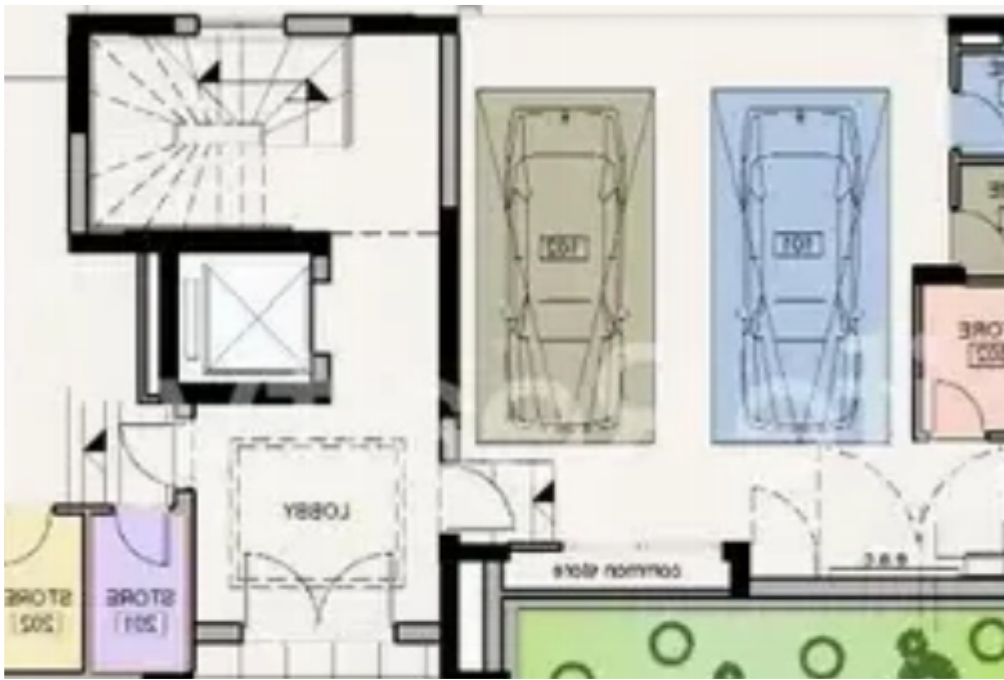
Limassol, Agios-Panteleimon-School-Agia-Phyla-Agia-Fylaxis-3116 ,  
Cyprus

This ad is presented by listings admin, under supervision from ,  
Licensed Real Estate Agent Reg no: 1234, Lic no: 603/E

**Offered at:** € 340,000

**Estate ID:** 28132

**Ref:** ba5220094





NET internal area: **81**



Bathrooms: **1**



Bedrooms: **2**



Parking spaces: **Covered cars**



Available from: **2024-04-19**



Offered at: **340,000**



Type: **Apartment**

""""""""This three-floor building, comprising four flats and two penthouses, is nestled in the sought after area of Panthea in Limassol. It boasts top-quality finishes, making it an appealing property for potential buyers. Located within the heart of the city, it's an 10-minute drive from the center of Limassol and only a 2-minute drive from the highway. Here are some key features you can expect from this upscale building: - Certificate of Energy Efficiency A. - Provisions for electric shutters. - Photovoltaic system on the roof. - Gated parking. Available: -Apartment 201 -Internal area: 81m2 - Covered verandas: 21m2 -Price: €340.00 +VAT Contact us today, for detailed information....

## Estate on map:

image not found or type unknown





**Website:** [realty.com.cy/p/2-bedroom-apartment-f?r-s?le-ba5220094](https://realty.com.cy/p/2-bedroom-apartment-f?r-s?le-ba5220094)

**Email:** [info@rimatech.com.cy](mailto:info@rimatech.com.cy)

**Phone:** [+35795958898](tel:+35795958898) // [+35725714014](tel:+35725714014)

This ad is presented by listings admin, under supervision from ,  
Licensed Real Estate Agent Reg no: 1234, Lic no: 603/E

