

## 3 bedrooms, 121 sq.m.

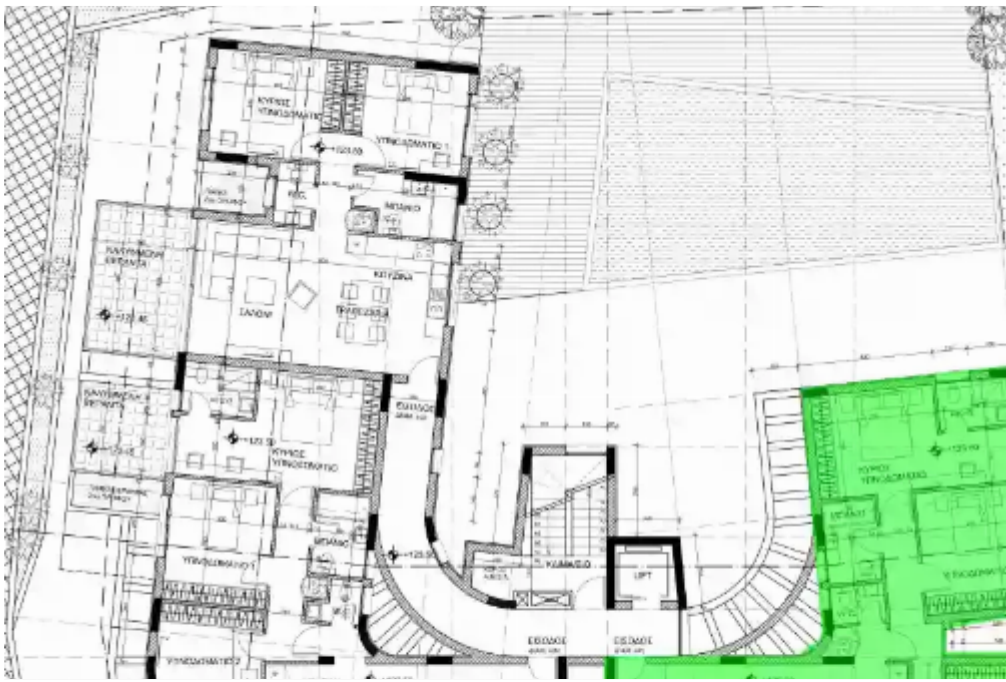
Limassol, Panthea-Mesa-Geitonia-4007 , Cyprus

This ad is presented by listings admin, under supervision from ,  
Licensed Real Estate Agent Reg no: 1234, Lic no: 603/E

**Offered at:** € 1,150,000

**Estate ID:** 29460

**Ref:** J3826L1382





NET internal area: **121**



Bathrooms: **2**



Bedrooms: **3**



Parking spaces: **1 cars**



Available from: **2024-04-23**



Offered at: **1,150,000**



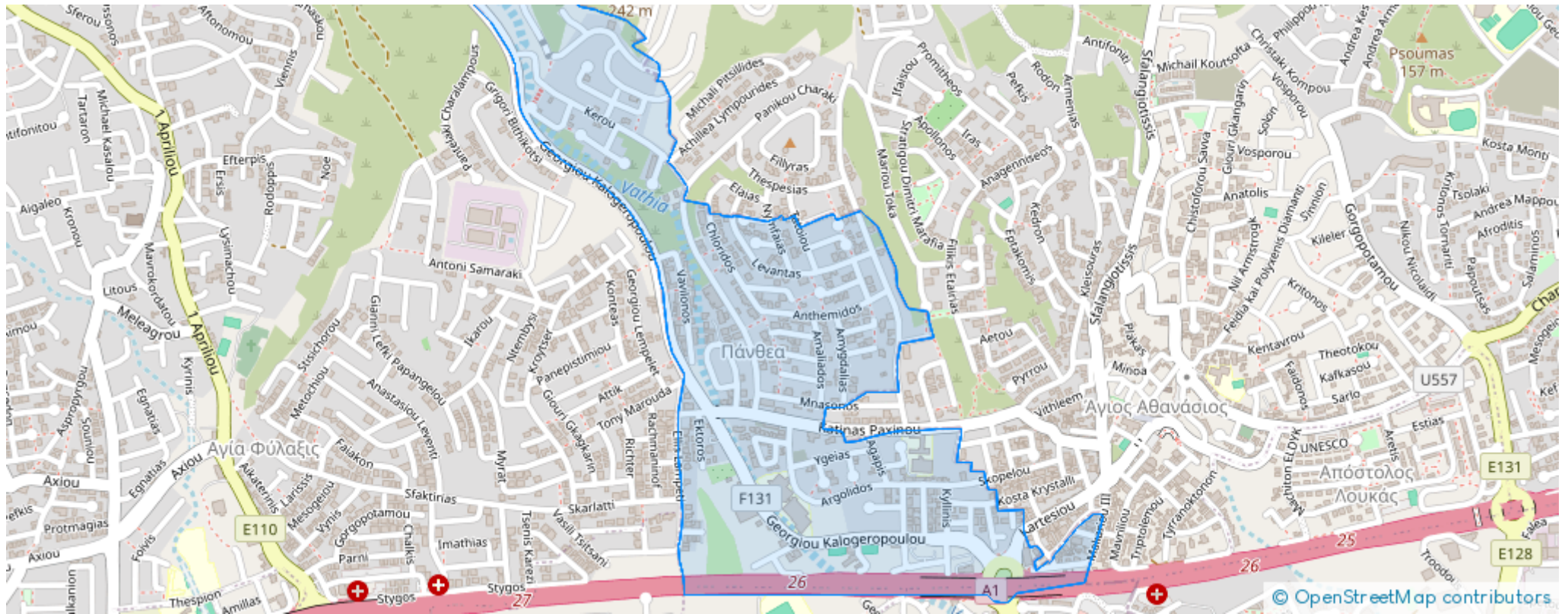
Type: **Apartment**



Veranda: **33 m²**

Welcome to the epitome of luxury and sophistication—Apartment 401, residing majestically on the fourth floor of this distinguished development. Spanning an expansive internal covered area of 121.50 square meters, Apartment 401 is meticulously crafted to exude elegance and functionality in every corner. Step onto the capacious 33.75 square meter balcony and be mesmerized by the captivating panoramic views, seamlessly blending the city's beauty with the horizon beyond. Distinguishing itself from the previous apartments, Apartment 401 boasts a grandeur unparalleled—a private roof garden spanning an impressive 82.20 square meters. This exclusive space elevates the living experience, off...

# Estate on map:





**Website:** [realty.com.cy/p/3-bedrooms--121-sq.m.-J3826L1382](https://realty.com.cy/p/3-bedrooms--121-sq.m.-J3826L1382)

**Email:** [info@rimatech.com.cy](mailto:info@rimatech.com.cy)

**Phone:** [+35795958898](tel:+35795958898) // [+35725714014](tel:+35725714014)

This ad is presented by listings admin, under supervision from ,  
Licensed Real Estate Agent Reg no: 1234, Lic no: 603/E

