

2 bedrooms, 76

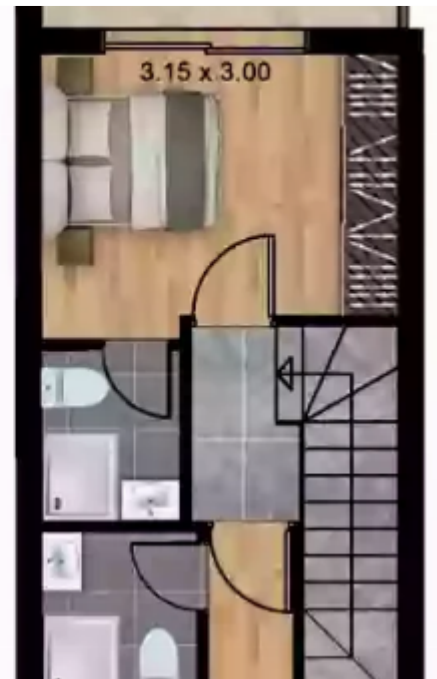
Limassol, Parekklesia-4520 , Cyprus

This ad is presented by listings admin, under supervision from ,
Licensed Real Estate Agent Reg no: 1234, Lic no: 603/E

Offered at: €314,900

Estate ID: 29751

Ref: J3442L1206





NET internal area: **76**



Bathrooms: **1**



Bedrooms: **2**



Parking spaces: **1 cars**



Available from: **2024-04-23**



Offered at: **314,900**



Type: **SemidetachedHouse**

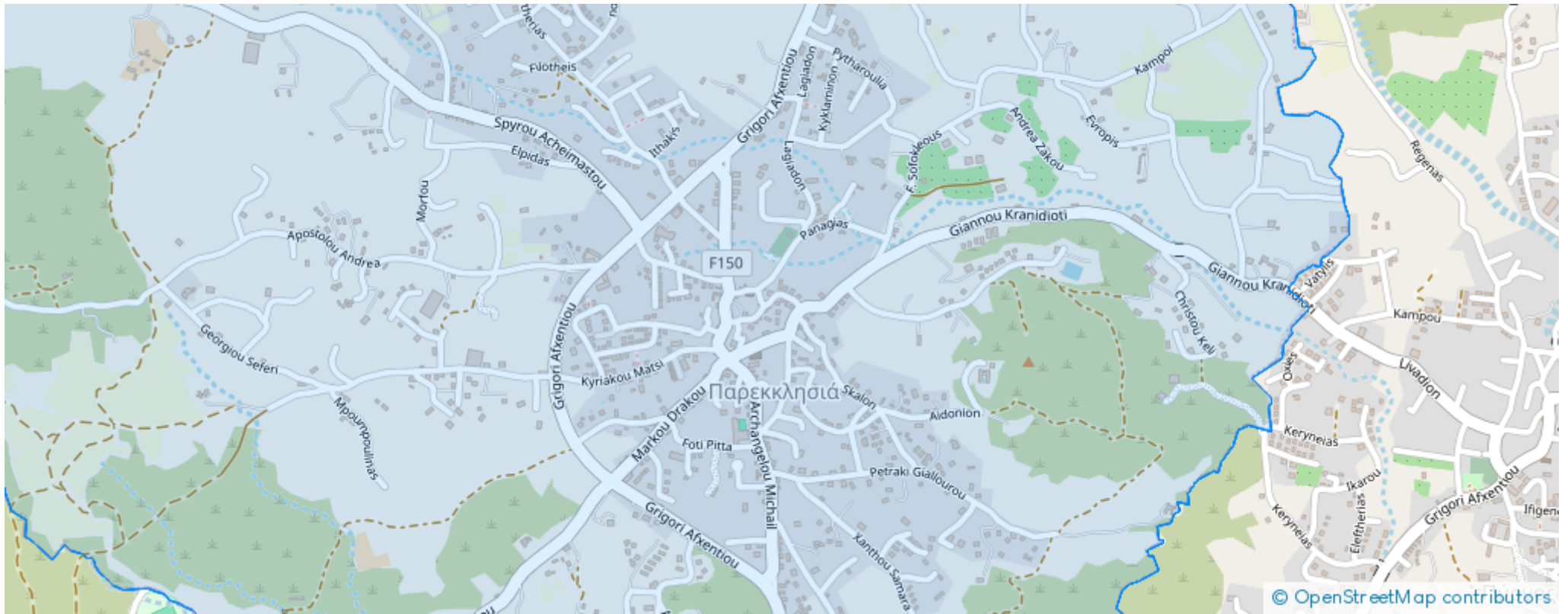


Veranda: **8 m²**

Charming 2-Bedroom Semidetached House with Parking Discover this exceptional semidetached house, known as House 41, boasting two spacious bedrooms, nestled in a serene location. With an internal covered area of 69 square meters and an inviting covered veranda spanning 8 square meters, this home offers ample space for relaxation and entertainment. Situated on a generously sized plot measuring 62 square meters, this property provides you with the perfect opportunity to create your dream outdoor oasis. The convenient parking space ensures hassle-free parking for you and your family.

Immerse yourself in the comforts of this delightful semidetached house, ideal for creating lasting memories...

Estate on map:





Website: realty.com.cy/p/2-bedrooms--76-J3442L1206

Email: info@rimatech.com.cy

Phone: [+35795958898](tel:+35795958898) // [+35725714014](tel:+35725714014)

This ad is presented by listings admin, under supervision from ,
Licensed Real Estate Agent Reg no: 1234, Lic no: 603/E

