



## 2 bedrooms, 77

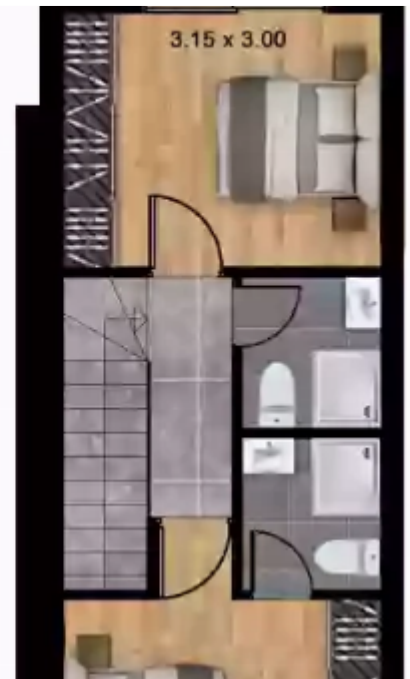
Limassol, Parekklesia-4520 , Cyprus

This ad is presented by listings admin, under supervision from ,  
Licensed Real Estate Agent Reg no: 1234, Lic no: 603/E

**Offered at:** €314,900

**Estate ID:** 29753

**Ref:** J3440L1197





NET internal area: **77**



Bathrooms: **1**



Bedrooms: **2**



Parking spaces: **1 cars**



Available from: **2024-04-23**



Offered at: **314,900**



Type: **SemidetachedHouse**

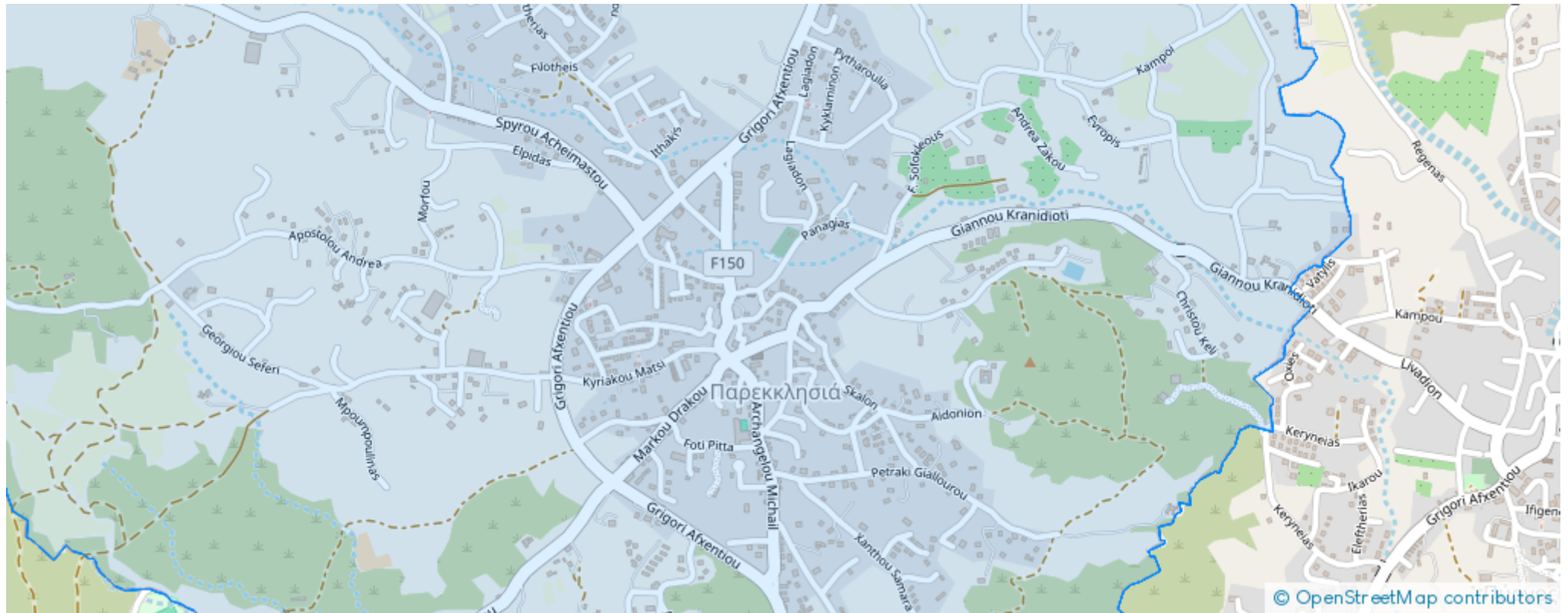


Veranda: **12 m²**

Charming 2-Bedroom Semidetached House with Parking Discover this exceptional semidetached house, known as House 39, boasting two spacious bedrooms, nestled in a serene location. With an internal covered area of 77 square meters and an inviting covered veranda spanning 12 square meters, this home offers ample space for relaxation and entertainment. Situated on a generously sized plot measuring 70 square meters, this property provides you with the perfect opportunity to create your dream outdoor oasis. The convenient parking space ensures hassle-free parking for you and your family.

Immerse yourself in the comforts of this delightful semidetached house, ideal for creating lasting memori...

## Estate on map:





**Website:** [realty.com.cy/p/2-bedrooms--77-J3440L1197](https://realty.com.cy/p/2-bedrooms--77-J3440L1197)

**Email:** [info@rimatech.com.cy](mailto:info@rimatech.com.cy)

**Phone:** [+35795958898](tel:+35795958898) // [+35725714014](tel:+35725714014)

This ad is presented by listings admin, under supervision from ,  
Licensed Real Estate Agent Reg no: 1234, Lic no: 603/E

