

2 bedrooms, 115 sq.m.

Limassol, Trilogy-Complex-Neapoli-3106 , Cyprus

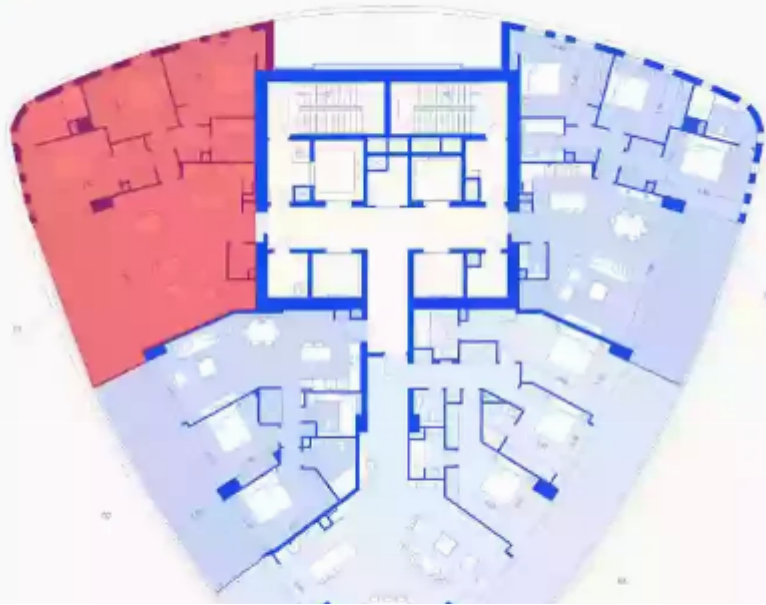
This ad is presented by listings admin, under supervision from ,
Licensed Real Estate Agent Reg no: 1234, Lic no: 603/E

Offered at: €2,100,000

Estate ID: 29960

Ref: J3351L962

APARTMENTS
Levels 20 - 26





NET internal area: **115**



Bathrooms: **2**



Bedrooms: **2**



Parking spaces: **1 cars**



Available from: **2024-04-23**



Offered at: **2,100,000**



Type: **Apartment**



Veranda: **49 m²**

Nestled in the heart of Limassol's affluent waterfront, Trilogy stands tall as an architectural masterpiece, redefining luxury living in the Mediterranean.

This exclusive development offers a collection of exquisite apartments and offices that epitomize elegance and sophistication. As you step into the grand 29-floor apartment at Trilogy, you'll be captivated by the breathtaking panoramic views of the glistening Mediterranean and the vibrant cityscape below. Spanning across 115 sqm, this residence exudes a sense of space and grandeur, perfect for those seeking a lavish and comfortable abode. With two luxurious bedrooms, you'll find ample space for your family and guests to enjoy the ut...

Estate on map:





Website: realty.com.cy/p/2-bedrooms--115-sq.m.-J3351L962

Email: info@rimatech.com.cy

Phone: [+35795958898](tel:+35795958898) // [+35725714014](tel:+35725714014)

This ad is presented by listings admin, under supervision from ,
Licensed Real Estate Agent Reg no: 1234, Lic no: 603/E

