



2-bedroom apartment f?r s?le

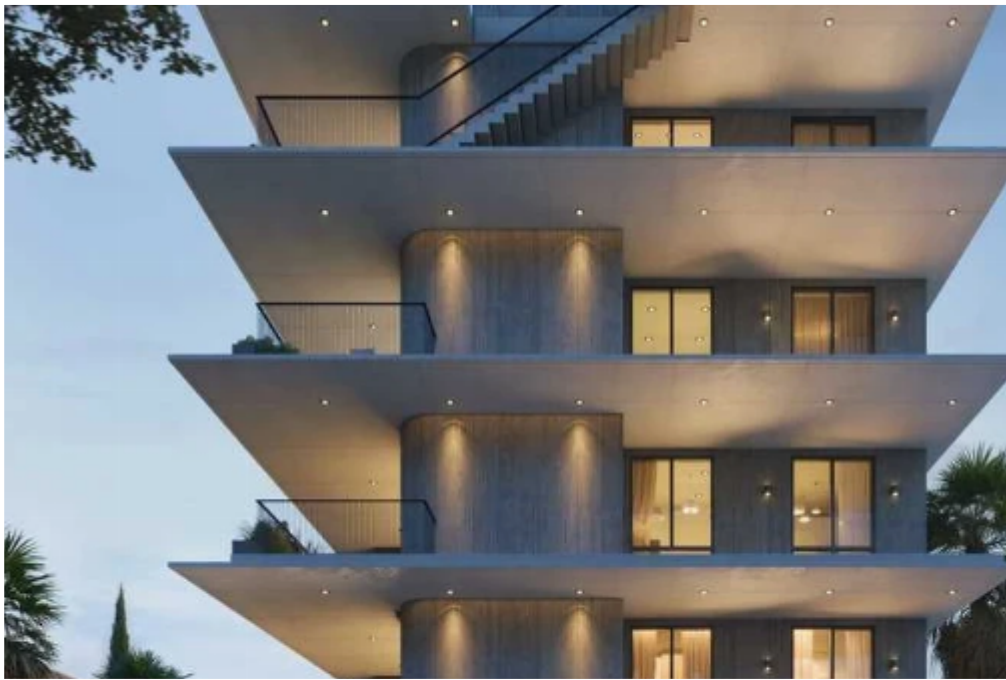
Limassol, Dassoudi-Park-Papas-Potamos-Germasogeias-4040 ,
Cyprus

This ad is presented by listings admin, under supervision from ,
Licensed Real Estate Agent Reg no: 1234, Lic no: 603/E

Offered at: €735,000

Estate ID: 3320

Ref: ba5845598





Bathrooms: **2**



Bedrooms: **2**



Parking spaces: **Covered cars**



Available from: **2025-06-18**



Offered at: **735,000**



Type: **Apartment**

""""""Specifications: ? Energy Class A+ ? Custom Interior Design ? Secured Access Entrance ? Gated Parking Area ?Central VrV Air-Condition System
? High Quality Italian Floors ? High Quality Finishes ? Photovoltaic System for each Apt ? Lift & Slide Aluminium Doors ? Electric Car Charger ?
Large Storage Areas Unit Areas: ???Indoor Area: 83m2 ???Covered Veranda: 24m2 ???Common Area: 8m2 Common Facilities: ??Sauna
???Swimming Pool ???Fully Equipped Gym ??Study Room for Remote Work Description: A spacious premium 2-bed apartment situated in Potamos
Germasogeias, in one of the most prestigious areas of Limassol.""""""...

Estate on map:





Website: realty.com.cy/p/2-bedroom-apartment-f?r-s?le-ba5845598

Email: om@liferealty.cy

Phone: [+35795958898](tel:+35795958898) // [+35725714014](tel:+35725714014)

This ad is presented by listings admin, under supervision from ,
Licensed Real Estate Agent Reg no: 1234, Lic no: 603/E