



2-bedroom apartment f?r s?le

€315.000

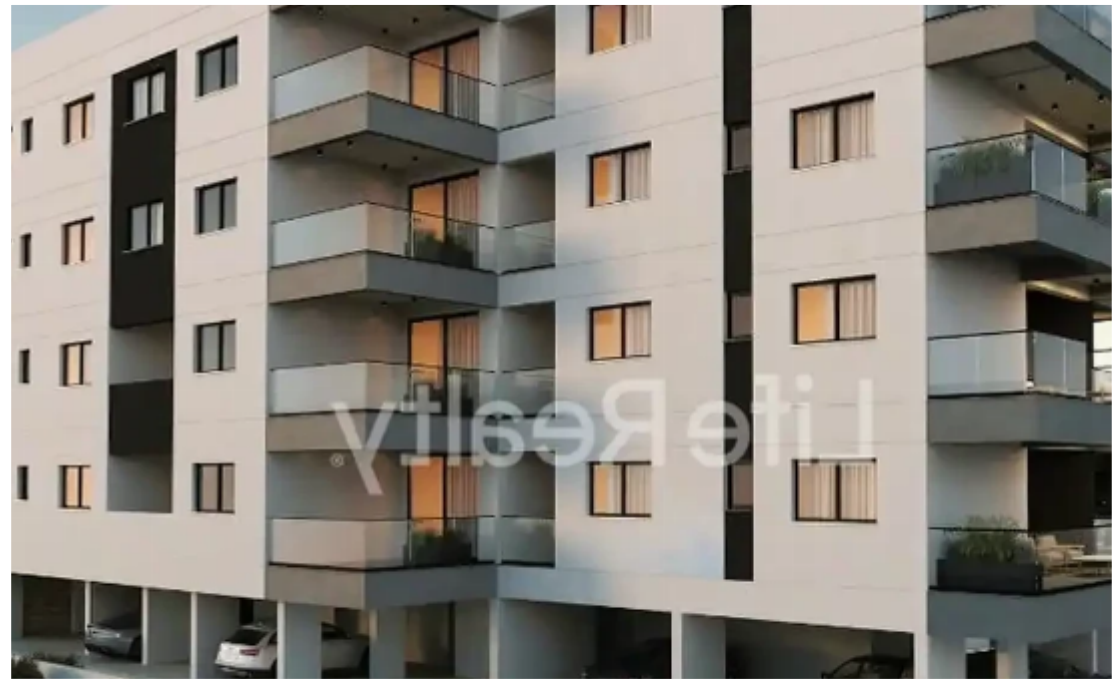
Limassol, Era-Apollon-Petros-And-Pavlos-3075 , Cyprus

This ad is presented by listings admin, under supervision from ,
Licensed Real Estate Agent Reg no: 1234, Lic no: 603/E

Offered at: €315,000

Estate ID: 34541

Ref: ba5229621





NET internal area: **75**



Bathrooms: **2**



Bedrooms: **2**



Parking spaces: **Covered cars**



Available from: **2024-04-26**



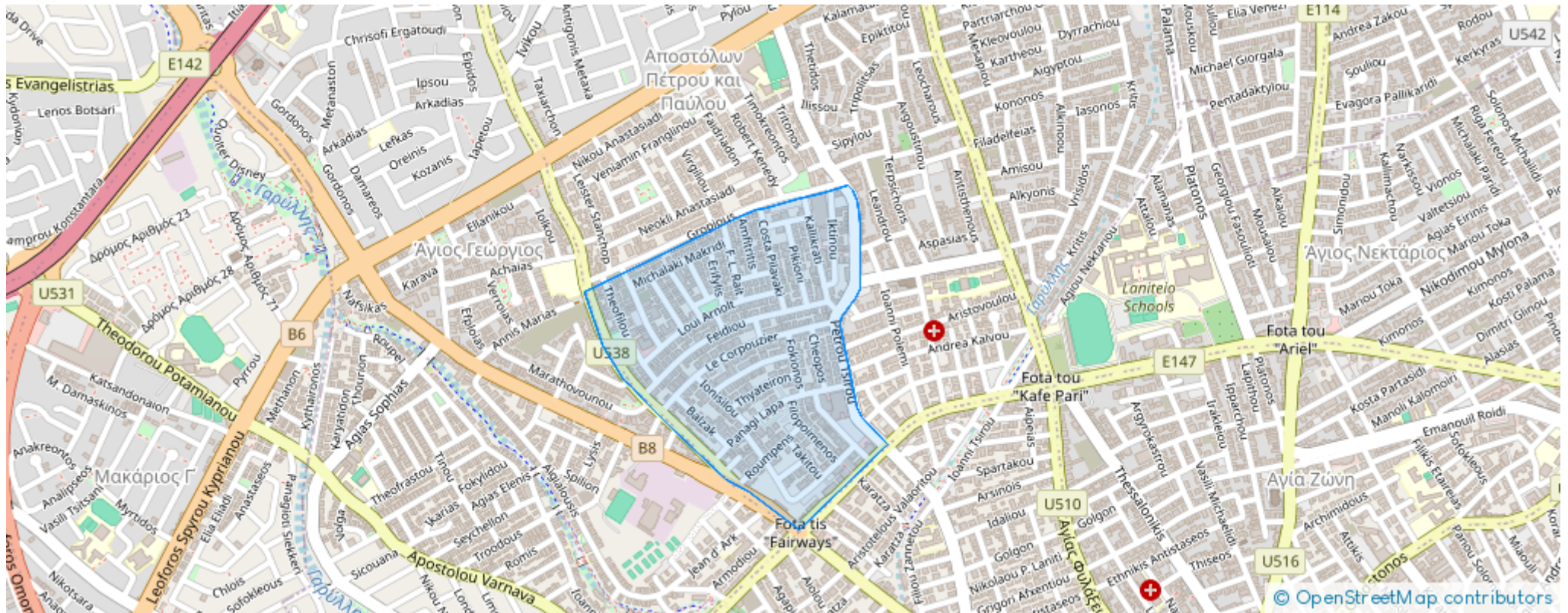
Offered at: **315,000**



Type: **Apartment**

This outstanding four-floor building comprises 17 apartments and 3 penthouses and is situated in the Omonoia area. Located in the popular Petrou & Pavlou area in Limassol, it is conveniently close to schools, banks, and markets. This is an ultra-modern apartment development, situated within the heart of the city, just a 5-minute drive from Limassol Marina and with easy access to the highway. Here are some key features you can expect from this luxury building: - Gated parking. - Safety Doors. - Video entry system. - Certificate of Energy Efficiency A. Availability: Apartment 104: - Internal area: 75m² - Covered veranda: 21m² Price: €315.000 +VAT Apartment 405: - Internal area: 78m²...

Estate on map:





Website: [realty.com.cy/p/2-bedroom-apartment-f?r-s?le-
€315.000-ba5229621](https://realty.com.cy/p/2-bedroom-apartment-f?r-s?le-€315.000-ba5229621)

Email: info@rimatech.com.cy

Phone: [+35795958898](tel:+35795958898) // [+35725714014](tel:+35725714014)

This ad is presented by listings admin, under supervision from ,
Licensed Real Estate Agent Reg no: 1234, Lic no: 603/E

