



2-bedroom apartment for sale

€295.000

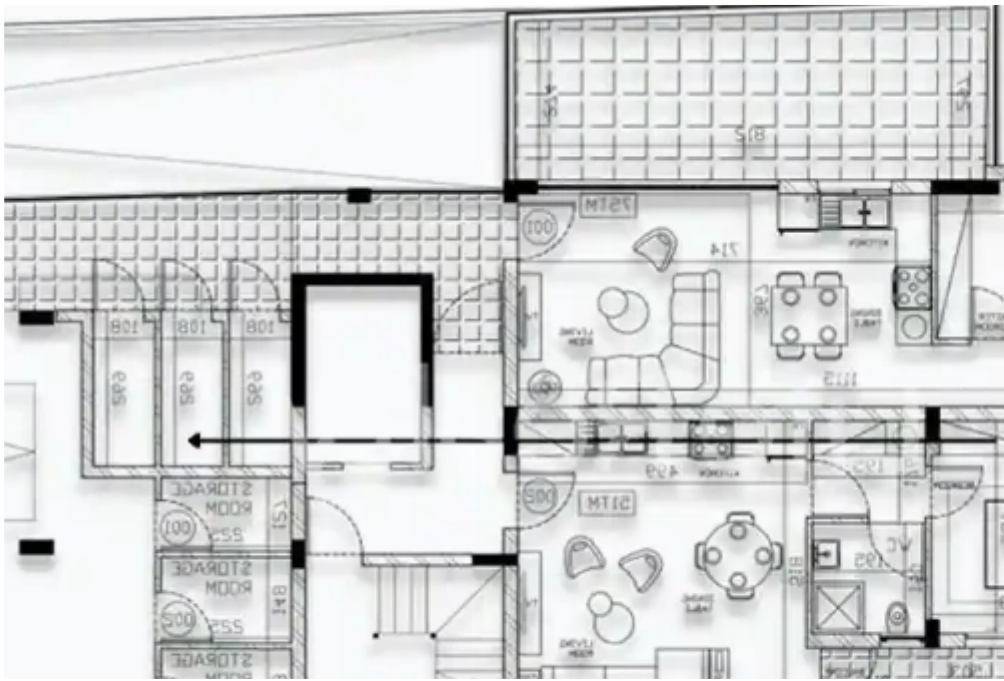
Limassol, Era-Apollon-Petros-And-Pavlos-3075 , Cyprus

This ad is presented by listings admin, under supervision from ,
Licensed Real Estate Agent Reg no: 1234, Lic no: 603/E

Offered at: € 300,000

Estate ID: 40833

Ref: ba5261722





NET internal area: **75**



Bathrooms: **2**



Bedrooms: **2**



Parking spaces: **Covered cars**



Available from: **2024-05-23**



Offered at: **300,000**

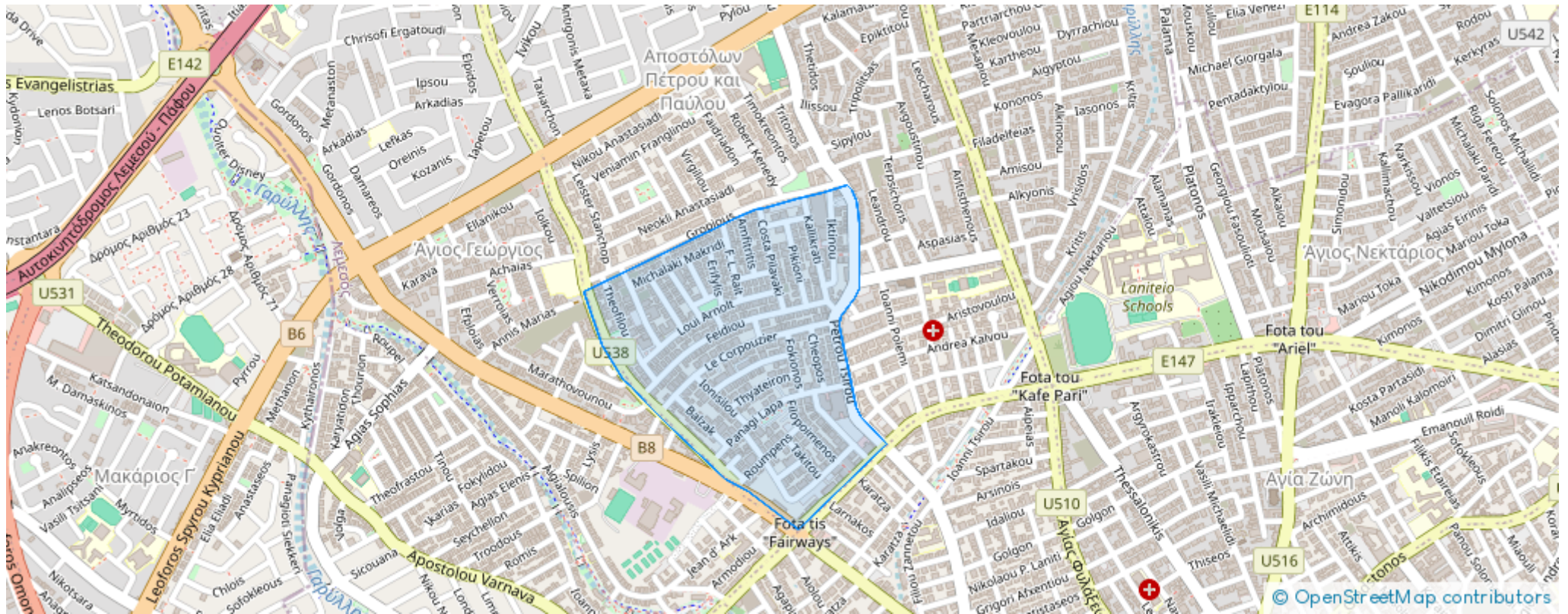


Type: **Apartment**

""""This outstanding three-floor building, comprising 8 exquisite apartments, is situated in the popular area Petrou & Pavlou in Limassol. Featuring top-quality finishes, it stands as an attractive property for potential buyers. These apartments are conveniently close to schools, banks, and markets.

Positioned in a ideal area with easy access to the highway and just a 7-minute drive from Limassol Marina, they offer a luxurious and convenient lifestyle. Here are some key features you can expect from this luxury building: - Gated residence. - Video entry system. - Photovoltaic system. - Parking bar with a remote control Available Apartments: - Covered areas: 75m2- 81m2 - Covered ve...

Estate on map:





Website: [realty.com.cy/p/2-bedroom-apartment-f?r-s?le-
€295.000-ba5261722](https://realty.com.cy/p/2-bedroom-apartment-f?r-s?le-€295.000-ba5261722)

Email: info@rimatech.com.cy

Phone: [+35795958898](tel:+35795958898) // [+35725714014](tel:+35725714014)

This ad is presented by listings admin, under supervision from ,
Licensed Real Estate Agent Reg no: 1234, Lic no: 603/E

