



2-bedroom apartment f?r s?le

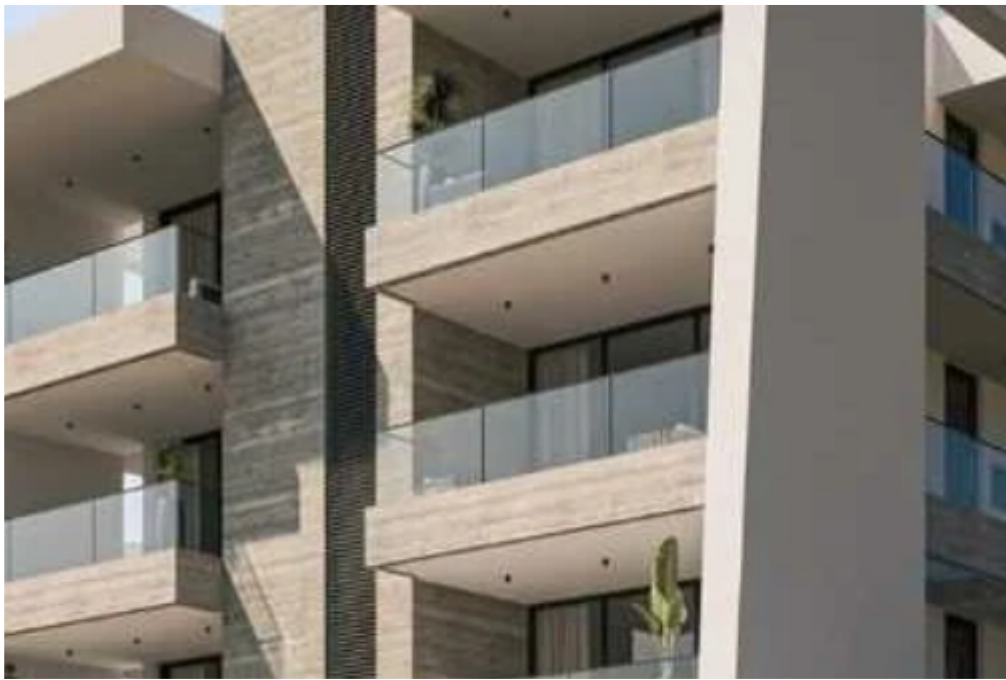
Limassol, Pano-Polemidia-4130 , Cyprus

This ad is presented by listings admin, under supervision from ,
Licensed Real Estate Agent Reg no: 1234, Lic no: 603/E

Offered at: € 300,000

Estate ID: 510

Ref: ba5665206





Bathrooms: **2**



Bedrooms: **2**



Parking spaces: **Covered cars**



Available from: **2025-04-22**



Offered at: **300,000**



Type: **Apartment**

""""""""""Located in the sought-after area of Ekali, this modern and spacious 2 Bedroom apartment offers a perfect blend of comfort and contemporary design. Situated on the second floor,the property boasts 78 sq.meters of internal space, complemented by 17.5 sq.meters of covered verandas ,ideal for relaxing or entertaining. Additional benefits include a 3.5 sq.meters storage room, covered parking and high quality finishes throughout. The apartment features: Spacious open plan living room/kitchen 2 Bedroom 2 Bathroom Storage room Covered veranda Covered parking Price: Plus VAT""""""""""...

Estate on map:





Website: realty.com.cy/p/2-bedroom-apartment-f?r-s?le-ba5665206

Email: om@liferealty.cy

Phone: [+35795958898](tel:+35795958898) // [+35725714014](tel:+35725714014)

This ad is presented by listings admin, under supervision from ,
Licensed Real Estate Agent Reg no: 1234, Lic no: 603/E