



## 2-bedroom apartment to rent

**€2.200**

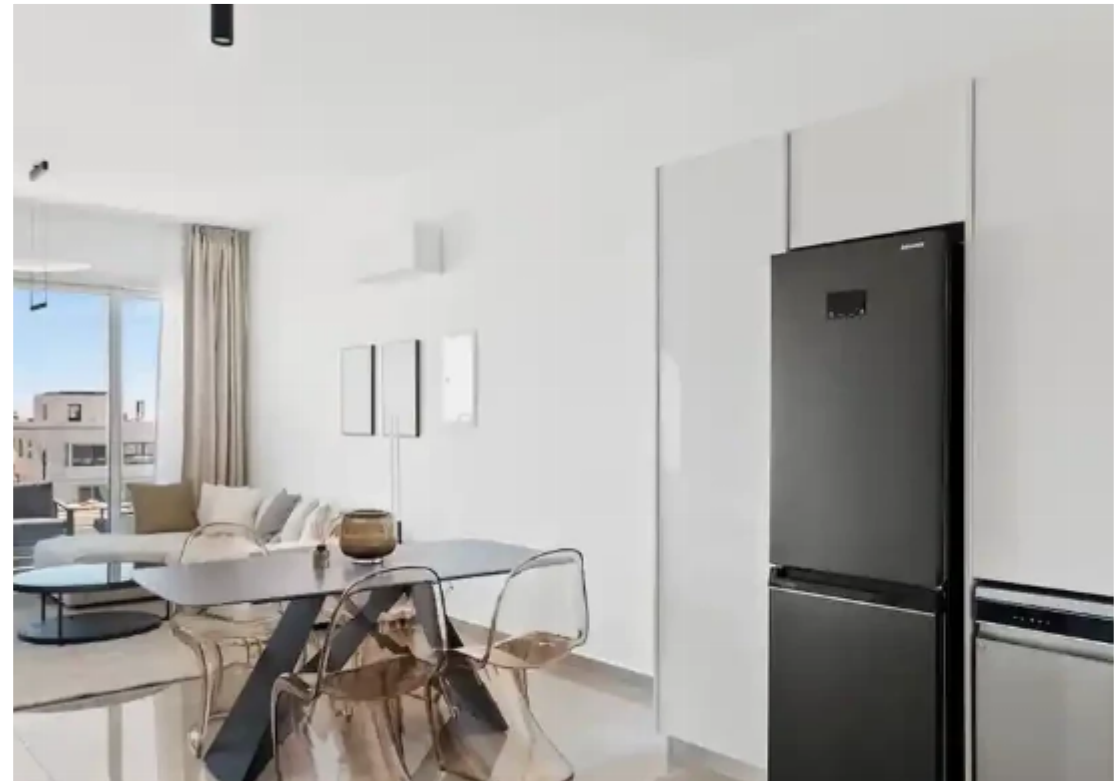
Limassol, Spyrou-Kyprianou-Ave-Kapsalos-3083 , Cyprus

This ad is presented by listings admin, under supervision from ,  
Licensed Real Estate Agent Reg no: 1234, Lic no: 603/E

**Offered at:** €2,100

**Estate ID:** 55366

**Ref:** ba5370627





NET internal area: **85**



Bathrooms: **2**



Bedrooms: **2**



Parking spaces: **Covered cars**



Available from: **2024-08-13**



Offered at: **2,100**



Type: **Apartment**

Embrace the comfort of space and modern amenities at Dwell li, our generously sized 2 bedroom apartment located in the vibrant heart of Limassol. Moving Doors is thrilled to offer a living solution that combines practicality with style, ensuring a delightful stay. Dwell li is designed to be your perfect urban retreat. Our fully serviced and equipped 2 bedroom apartment offers ample space, making it ideal for families, friends, or colleagues. Whether you're in town for business, leisure, or a bit of both, Dwell li provides a balanced living experience. Highlights: Spacious and stylish: Discover the joy of living in a spacious apartment, thoughtfully designed with modern amenities and st...

# Estate on map:





**Website:** [realty.com.cy/p/2-bedroom-apartment-to-rent-€2.200-ba5370627](https://realty.com.cy/p/2-bedroom-apartment-to-rent-€2.200-ba5370627)

**Email:** [info@rimatech.com.cy](mailto:info@rimatech.com.cy)

**Phone:** [+35795958898](tel:+35795958898) // [+35725714014](tel:+35725714014)

This ad is presented by listings admin, under supervision from ,  
Licensed Real Estate Agent Reg no: 1234, Lic no: 603/E

