



2-bedroom apartment to rent

€1.850

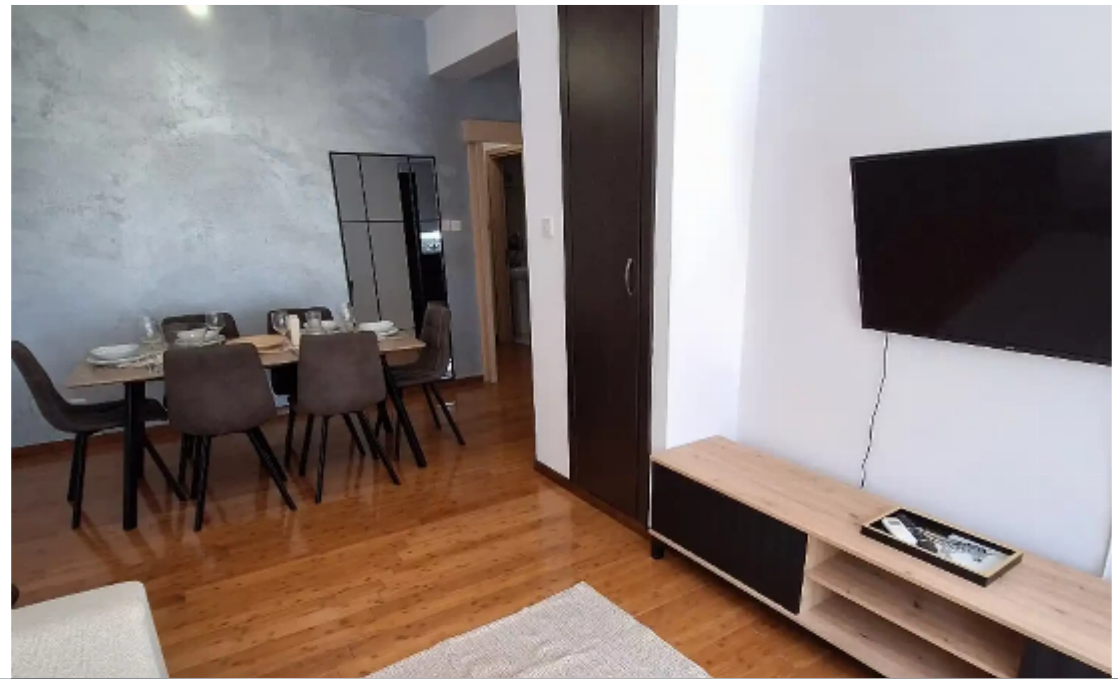
Limassol, Touristiki-Periochi-Parekklesia-4533 , Cyprus

This ad is presented by listings admin, under supervision from ,
Licensed Real Estate Agent Reg no: 1234, Lic no: 603/E

Offered at: € 1,850

Estate ID: 59507

Ref: ba5398824





NET internal area: **88**



Bathrooms: **1**



Bedrooms: **2**



Parking spaces: **Uncovered cars**



Available from: **2024-08-30**



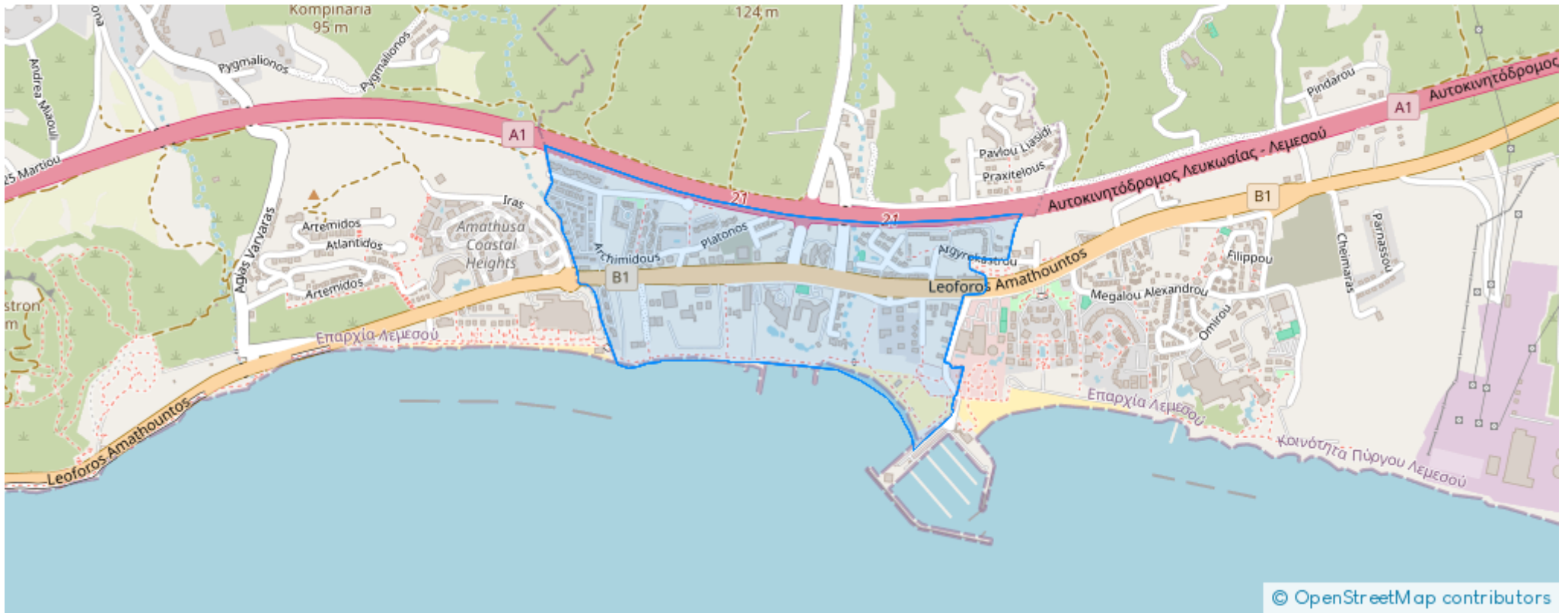
Offered at: **1,850**



Type: **Apartment**

Spacious 2-bedroom apartment, located in Parekklesia Tourist Area, close to Ararat tower and Amara hotel, 300m from sandy beach. The apartment is perfect for family; couple needed additional room for an office or two couples. Both bedrooms are very spacious and equipped with king-sized beds and build-in wardrobes. The kitchen is fully equipped with all new appliances needed for cooking. The apartment is located on the ground floor, straight from the parking. The apartment has 88m2 (internal area) plus a balcony from the garden side and a small veranda from the parking side....

Estate on map:





Website: realty.com.cy/p/2-bedroom-apartment-to-rent-€1.850-ba5398824

Email: info@rimatech.com.cy

Phone: [+35795958898](tel:+35795958898) // [+35725714014](tel:+35725714014)

This ad is presented by listings admin, under supervision from ,
Licensed Real Estate Agent Reg no: 1234, Lic no: 603/E

