



3-bedroom penthouse to rent

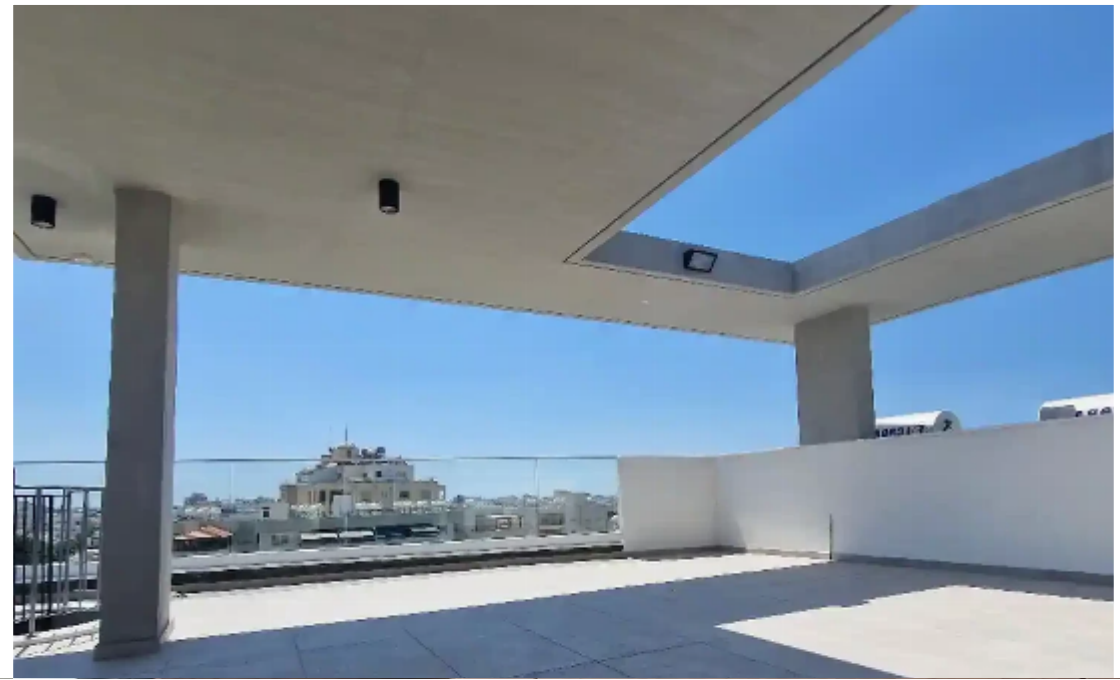
Limassol, Tricherousas-Primary-School-Petros-And-Pavlos-3076 ,
Cyprus

This ad is presented by listings admin, under supervision from ,
Licensed Real Estate Agent Reg no: 1234, Lic no: 603/E

Offered at: €4,000

Estate ID: 67975

Ref: ba5444818





NET internal area: **215**



Bathrooms: **2**



Bedrooms: **3**



Parking spaces: **Covered cars**



Available from: **2024-10-24**



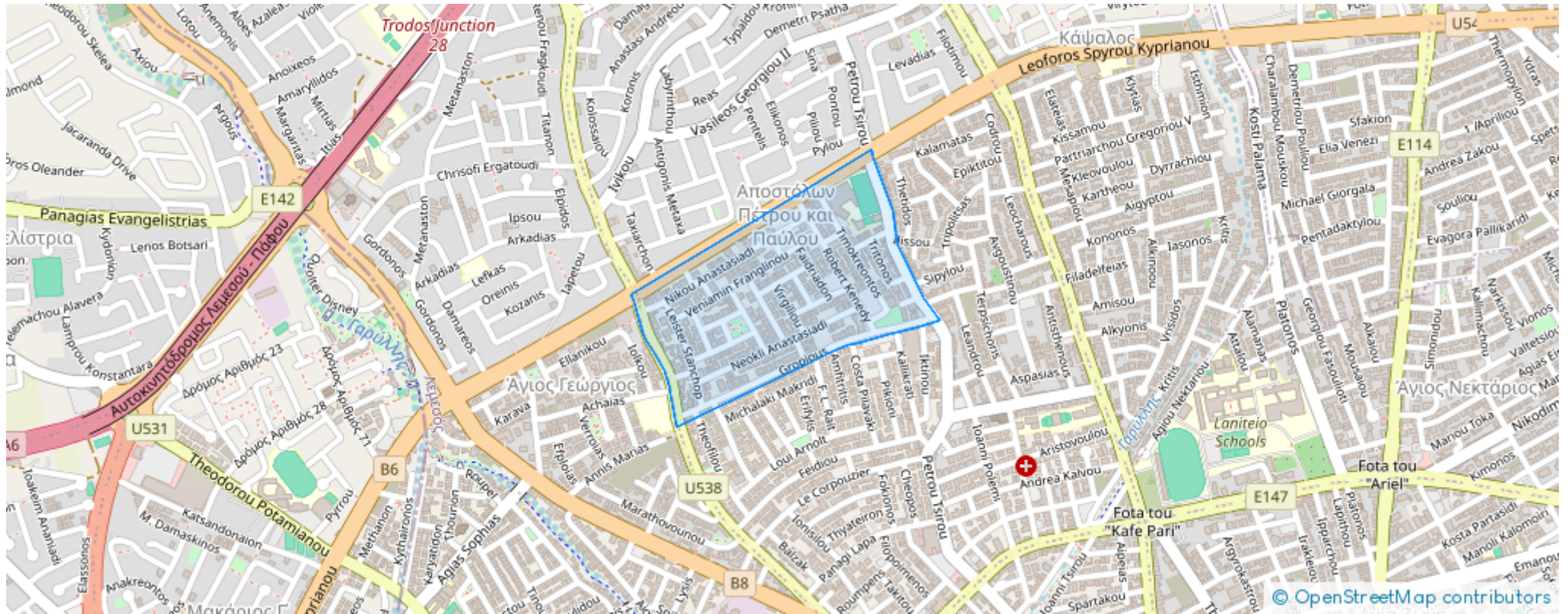
Offered at: **4,000**



Type: **Penthouse**

....."New 3-bedroom penthouse with a rooftop garden in Limassol! The penthouse is located in the beautiful and safe Naafi area (Petrou & Pavlou) in Limassol, next to a green park with easy access to the highway and all essential amenities. Key features: 2 floors Indoor covered area: 95 sq.m Covered veranda: 25 sq.m Rooftop garden: 90 sq.m 3 bedrooms 1 bathroom and 2 toilets Fully equipped kitchen Spacious bedrooms with high ceilings Covered, secure parking 2 large storage rooms The only apartment with a rooftop garden and stunning views of the entire city Advantages: Option to rent furnished or unfurnished (terms can be discussed) Available for immediate move-in This pentho...

Estate on map:





Website: realty.com.cy/p/3-bedroom-penthouse-to-rent-ba5444818

Email: info@rimatech.com.cy

Phone: [+35795958898](tel:+35795958898) // [+35725714014](tel:+35725714014)

This ad is presented by listings admin, under supervision from ,
Licensed Real Estate Agent Reg no: 1234, Lic no: 603/E

