



Office building in mesa geitonia, limassol

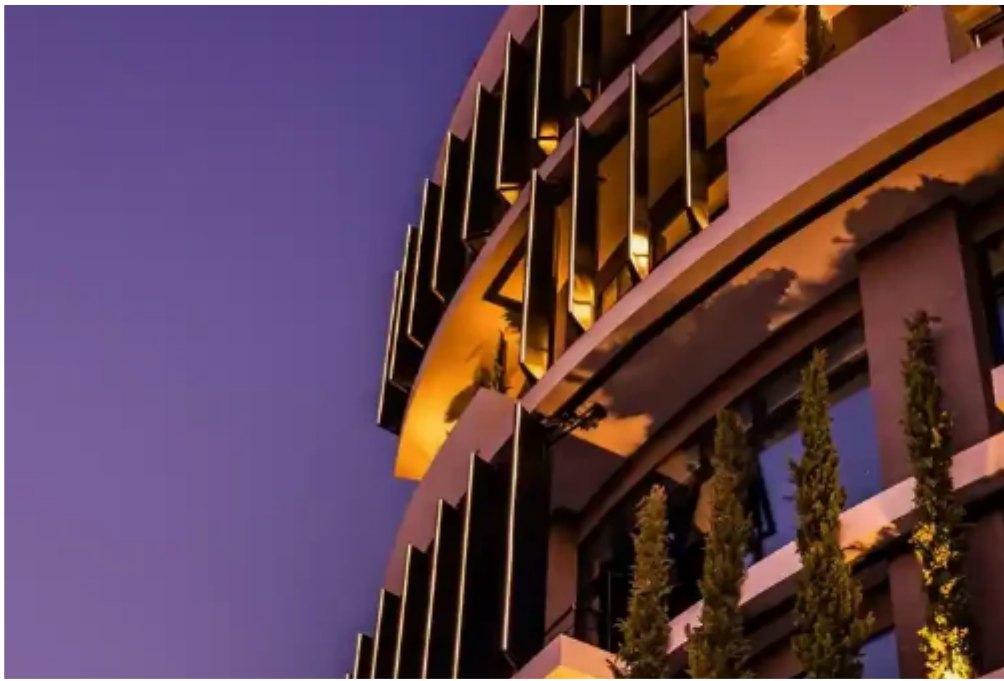
Limassol, Super-Home-Center-Timou-Prodromou-Mesa-Geitonia-4004 , Cyprus

This ad is presented by listings admin, under supervision from ,
Licensed Real Estate Agent Reg no: 1234, Lic no: 603/E

Offered at: €8,000,000

Estate ID: 69389

Ref: ba5084859





Available from: **2024-10-25**



Offered at: **8,000,000**



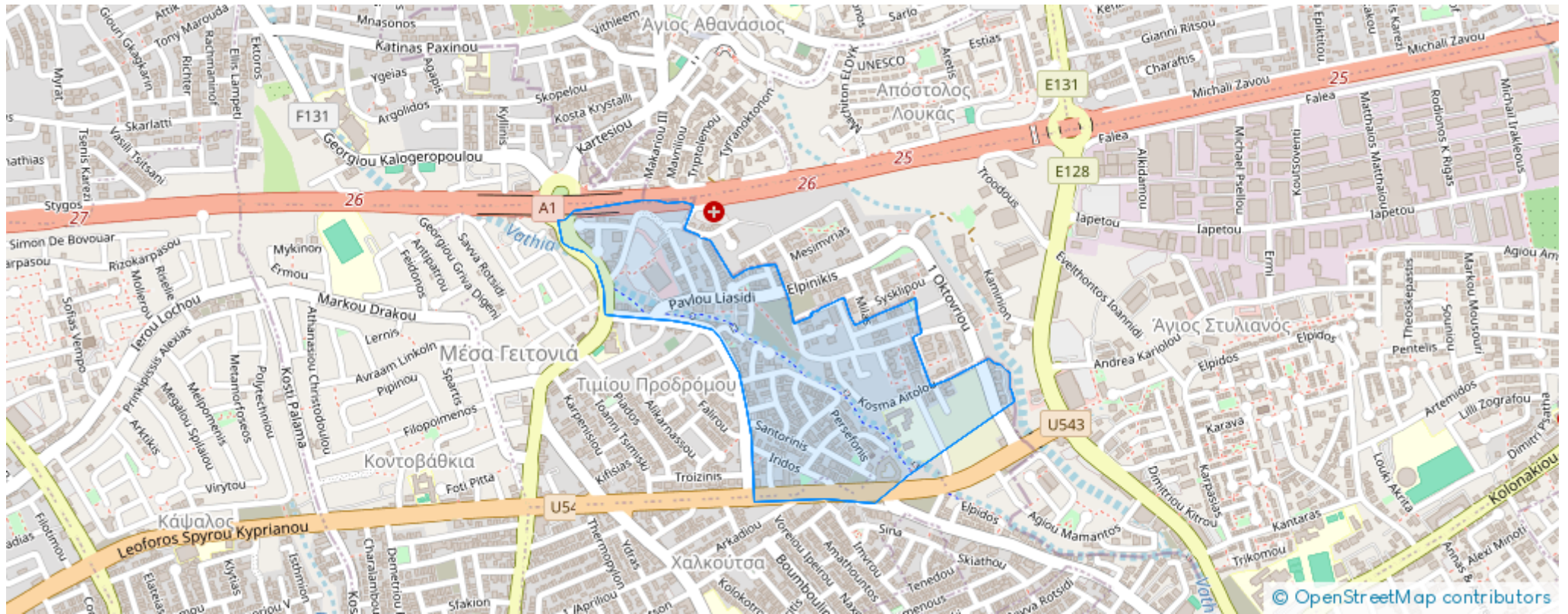
Type: **Space**



Year of build: **2022**

""""High quality office accommodation over four floors. The building occupies a prominent corner position in the busiest commercial avenues and benefits with easy access to highway. The office benefits from reduced electricity consumption due its environmentally friendly design philosophy which includes PV panels at the façade with estimated annual energy savings. The ground floor includes a spacious double height reception area and a guest waiting zone, with manned reception. The users have access to a modern café with roof-garden for hosting private gatherings and events. Covered parking areas at the basement level. Additional uncovered parking space off-site at additional cost per month...

Estate on map:





Website: realty.com.cy/p/office-building-in-mesa-geitonia--limassol-ba5084859

Email: info@rimatech.com.cy

Phone: [+35795958898](tel:+35795958898) // [+35725714014](tel:+35725714014)

This ad is presented by listings admin, under supervision from ,
Licensed Real Estate Agent Reg no: 1234, Lic no: 603/E

