



## 2-bedroom apartment f?r s?le

Limassol, Lidl-Touristiki-Periohi-Tsiflikoudia-3013 , Cyprus

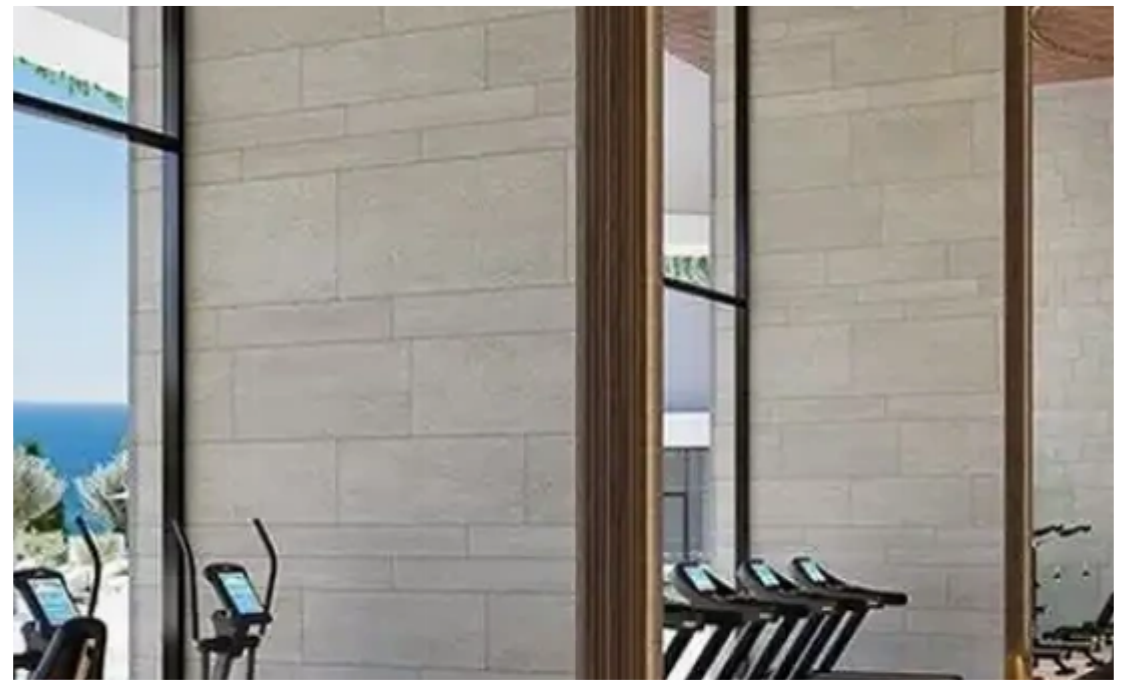
This ad is presented by listings admin, under supervision from ,

Licensed Real Estate Agent Reg no: 1234, Lic no: 603/E

**Offered at:** €735,000

**Estate ID:** 69944

**Ref:** ba4862685





Bathrooms: **1**



Bedrooms: **2**



Parking spaces: **No cars**



Available from: **2024-10-25**



Offered at: **735,000**



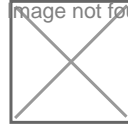
Type: **Apartment**

....."Europe's New Riviera. It is a first class freehold investment opportunity with an upside outlook. Near the Limassol Marina, in the heart of everything in Limassol's downtown and surrounded by billions worth infrastructure investments this area will change the face and status of Cyprus and drive the economy for years to come. The articulated residential towers rising above the podium allow all residences the finest city and Mediterranean views. A wealth of world class facilities spread within 13,000 sqm alongside 24hr concierge services, housekeeping, property and rental management services will cater for every need. Luxurious lobby with 24-hour concierge service Multi-cui...



## Estate on map:

image not found or type unknown





**Website:** [realty.com.cy/p/2-bedroom-apartment-f?r-s?le-ba4862685](https://realty.com.cy/p/2-bedroom-apartment-f?r-s?le-ba4862685)

**Email:** [info@rimatech.com.cy](mailto:info@rimatech.com.cy)

**Phone:** [+35795958898](tel:+35795958898) // [+35725714014](tel:+35725714014)

This ad is presented by listings admin, under supervision from ,  
Licensed Real Estate Agent Reg no: 1234, Lic no: 603/E

